

Specification

Nominal Voltage	2V	
Nominal Capacity(100HR)	115.0AH	
Dimension	Length	170±2mm (6.69 inches)
	Width	72±1mm (2.83 inches)
	Container Height	205±3mm (8.07 inches)
	Total Height (with Terminal)	212±3mm (8.35 inches)
Approx Weight	Approx 6.0 Kg (13.2 lbs)	
Terminal	T6	
Container Material	ABS	
Rated Capacity	115.0 AH/1.15A	(100hr ,1.80V/cell,25°C/77°F)
	107.0 AH/5.35A	(20hr ,1.80V/cell,25°C/77°F)
	100.0 AH/10.0A	(10hr,1.80V/cell,25°C/77°F)
	88.0 AH/17.6A	(5hr,1.75V/cell,25°C/77°F)
	58.8AH/58.8A	(1hr,1.60V/cell,25°C/77°F)
Max. Discharge Current	800A (5s)	
Internal Resistance	Approx 1.4mΩ	
Operating Temp.Range	Discharge	-15~50°C (5~122°F)
	Charge	0~40°C (32~104°F)
	Storage	-15~40°C (5~104°F)
Nominal Operating Temp. Range	25±3°C (77±5°F)	
Cycle Use	Initial Charging Current less than30.0A.Voltage 2.4V~2.5V at 25°C(77°F)Temp. Coefficient -5mV/°C	
Standby Use	No limit on Initial Charging Current Voltage 2.25V~2.3V at 25°C(77°F)Temp. Coefficient -3mV/°C	
Capacity affected by Temperature	40°C (104°F)	103%
	25°C (77°F)	100%
	0°C (32°F)	86%
Self Discharge	Leoch LPS series batteries may be stored for up to 6 months at 25°C(77°F) and then a freshening charge is required. For higher temperatures the time interval will be shorter.	



Applications

- ◆ Green energy systems
- ◆ Communication systems

Leoch battery is green battery, focus on the Environmental protection and Ecological protection, which well connect human being and environment into harmony. Continuous power supply for people, and being benign cycle back to the green environment.



Constant Current Discharge (Amperes) at 25 °C (77°F)

F.V/Time	30min	45min	1h	2h	3h	4h	5h	8h	10h	20h	48h	100h
1.85V/cell	73.4	58.2	48.3	30.2	23.3	19.2	16.4	11.7	9.68	5.17	2.29	1.13
1.80V/cell	78.7	61.3	51.4	31.9	24.4	20.1	17.0	12.0	10.0	5.35	2.33	1.15
1.75V/cell	83.4	64.4	53.6	33.1	25.3	20.8	17.6	12.2	10.2	5.38	2.36	1.16
1.70V/cell	87.5	66.9	55.5	34.1	25.9	21.2	17.9	12.4	10.3	5.44	2.39	1.18
1.65V/cell	91.8	69.8	57.4	34.9	26.6	21.7	18.3	12.6	10.4	5.52	2.42	1.19
1.60V/cell	94.9	71.6	58.8	35.6	27.0	22.0	18.5	12.8	10.6	5.58	2.45	1.20

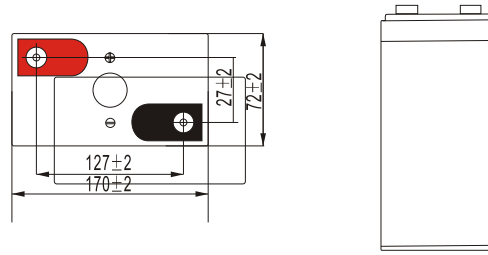
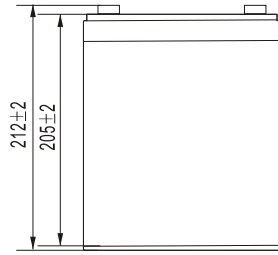
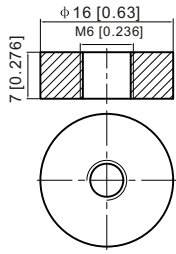
Constant Power Discharge (Watts) at 25 °C (77°F)

F.V/Time	30min	45min	1h	2h	3h	4h	5h	8h	10h	20h	48h	100h
1.85V/cell	140.3	112.0	93.5	58.6	45.6	37.7	32.2	23.1	19.3	10.3	4.56	2.25
1.80V/cell	149.3	117.0	98.8	61.7	47.5	39.2	33.4	23.8	19.9	10.6	4.63	2.29
1.75V/cell	156.9	122.3	102.6	63.7	49.0	40.4	34.4	24.2	20.1	10.7	4.70	2.31
1.70V/cell	163.2	126.1	105.7	65.4	50.1	41.1	34.8	24.5	20.3	10.8	4.74	2.34
1.65V/cell	169.9	130.8	108.8	66.6	51.1	41.9	35.5	24.8	20.6	10.9	4.80	2.36
1.60V/cell	174.0	133.0	110.6	67.6	51.7	42.3	35.8	25.1	20.8	11.0	4.84	2.38

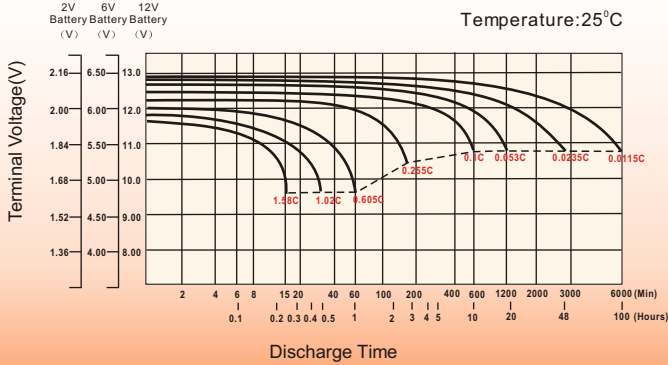
Dimensions

T6 Terminal

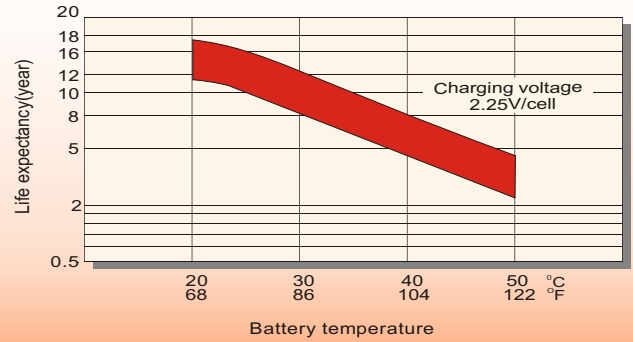
Unit: mm [inches]



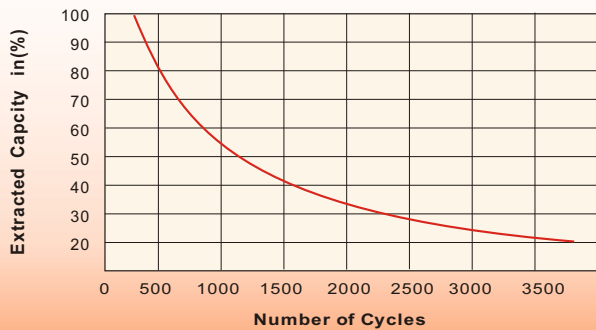
Discharge Characteristics



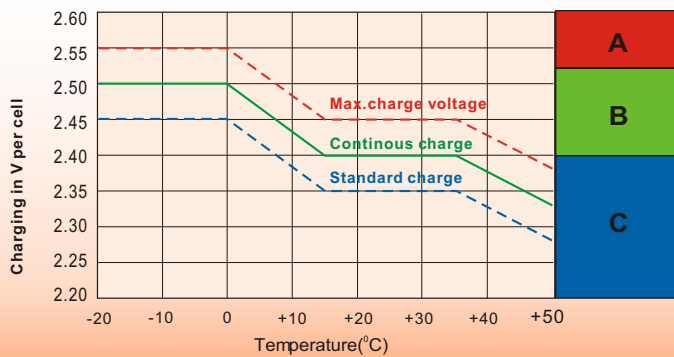
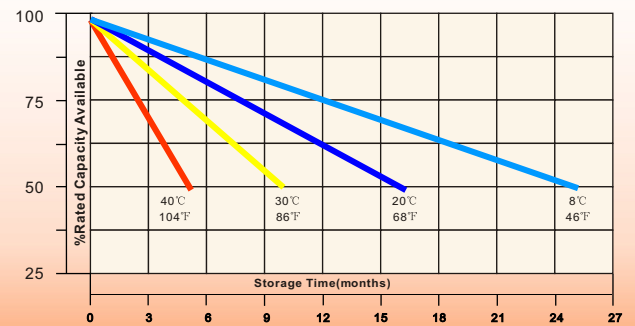
Effect of Temperature on Long Term Float Life



Cycle Service Life



Self-Discharge at Different Temperatures



Charge Mode

- A** With switch regulator (two-step controller) charge on curve max.charge voltage for max.2 hrs/day then switch over to continuous charge
- B** Standard charge without switching
- C** Boost charge (Equalizing charge with external generator) charge on curve continuous charge for max. 5 hrs/month, then switch over to curve Standard charge

Sales Office

China sales office:

Add:5th Floor,Xinbaohui Bldg.,Nanhai Blvd.,
Nanshan,Shenzhen, China. 518052
Tel:+8 6-755-86036060 (100 lines)
Fax: +86-755-26067269
E-mail:export@leoch.com
Http://www.leoch.com

North America sales office:

Add: 19751 Descartes, Unit A,
Foothill Ranch, CA 92610, USA
Tel: 949-588-5853
Fax: 949-588-5966
E-mail: sales@leoch.us
Http://www.leoch.us

Europe sales office:

Add: 9B Wheatstone Park, Waterwells
Business Park, Gloucester, GL2 2AQ. UK.
Tel: +44(0) 01452 729428
Fax: +44 (0)1452-690125
E-mail: Sales.Europe@leoch.com

Singapore sales office:

Add: No.53,Ubi Avenue 1, #03-21 Paya
Ubi Industrial Park, Singapore 408934
Tel:+ 65 6841 6629
E-mail: sales.sg@leoch.com

HongKong sales office:

Add: Unit 3910,39/F,Cable TV Tower,No.9
Hoi Shing Road,Tsuen Wan, NT.H.K
Tel: +852 3578 6666
E-mail: sales.hk@leoch.com