

LPL SERIES-Long Life Standby

LPL2-800 (2V800AH)

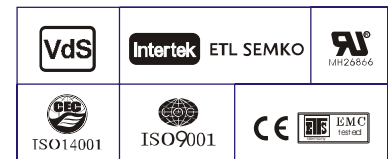
Specification

Nominal Voltage	2V	
Nominal Capacity(10HR)	800.0AH	
Dimension	Length	410±3mm (16.14 inches)
	Width	175±2mm (6.89 inches)
	Container Height	330±3mm (12.99 inches)
	Total Height (with Terminal)	350±3mm (13.78 inches)
	Approx Weight	Approx 51.5 Kg (113.6lbs)
Terminal	T11	
Container Material	ABS	
Rated Capacity	854.0AH/42.7A	(20hr, 1.80V/cell, 25°C/77°F)
	800.0AH/80.0A	(10hr, 1.80V/cell, 25°C/77°F)
	710.0AH/142.0A	(5hr, 1.75V/cell, 25°C/77°F)
	617.7AH/205.9A	(3hr, 1.75V/cell, 25°C/77°F)
	480.5AH/480.5A	(1hr, 1.60V/cell, 25°C/77°F)
Max. Discharge Current	6400A (5s)	
Internal Resistance	Approx 0.5mΩ	
Operating Temp. Range	Discharge : -15~50°C (5~122°F)	
	Charge : 0~40°C (32~104°F)	
	Storage : -15~40°C (5~104°F)	
Nominal Operating Temp. Range	25±3°C (77±5°F)	
Cycle Use	Initial Charging Current less than 240.0A. Voltage 2.4V~2.5V at 25°C(77°F)Temp. Coefficient -5mV/°C	
	Standby Use No limit on Initial Charging Current Voltage 2.25V~2.3V at 25°C(77°F)Temp. Coefficient -3mV/°C	
Capacity affected by Temperature	40°C (104°F)	103%
	25°C (77°F)	100%
	0°C (32°F)	86%
Self Discharge	Leoch LPL series batteries may be stored for up to 6 months at 25°C(77°F) and then a freshening charge is required. For higher temperatures the time interval will be shorter.	



Applications

- ◆ Tele-communication central station (wired or cellular)
- ◆ Power system communication, military communication, etc.
- ◆ Network communication including: data transmission, television signal transmission, etc.
- ◆ Uninterruptable Power System (UPS- for Telecom)
- ◆ EPS



Constant Current Discharge (Amperes) at 25 °C (77°F)

F.V/Time	30min	45min	1h	2h	3h	4h	5h	6h	8h	10h	20h
1.85V/cell	600.3	481.3	401.3	248.8	189.9	155.2	132.2	115.5	92.4	77.0	41.2
1.80V/cell	644.1	506.3	419.6	260.0	199.2	162.2	137.7	120.6	96.4	80.0	42.7
1.75V/cell	682.1	532.4	437.8	270.4	205.9	167.7	142.0	123.5	98.3	81.0	42.9
1.70V/cell	715.7	552.5	453.2	281.2	212.3	171.4	144.4	125.7	100.0	82.0	43.4
1.65V/cell	750.7	576.5	469.5	290.4	217.1	175.0	147.5	127.8	101.5	83.0	43.8
1.60V/cell	776.4	592.0	480.5	296.0	220.8	177.5	149.7	129.6	103.0	84.2	44.1

Constant Power Discharge (Watts) at 25 °C (77°F)

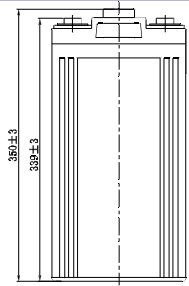
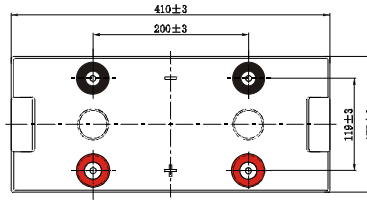
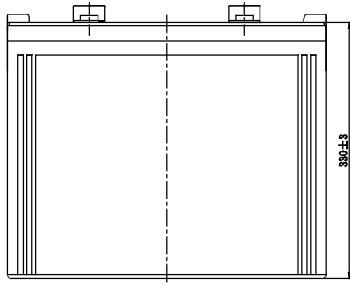
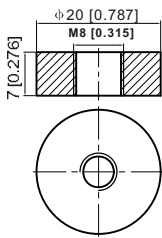
F.V/Time	30min	45min	1h	2h	3h	4h	5h	6h	8h	10h	20h
1.85V/cell	1147.2	925.4	776.2	483.9	371.1	304.5	260.4	228.2	183.4	153.2	82.1
1.80V/cell	1221.0	967.1	807.1	503.3	387.5	317.0	270.2	237.4	190.7	158.9	84.8
1.75V/cell	1283.2	1011.0	838.4	521.4	399.4	326.7	277.5	242.3	194.0	160.7	85.1
1.70V/cell	1335.1	1041.7	863.2	539.9	410.2	332.4	281.5	246.2	197.2	162.5	86.0
1.65V/cell	1390.0	1081.0	889.2	555.2	417.7	338.4	286.5	249.7	199.7	164.2	86.8
1.60V/cell	1423.2	1099.7	903.9	562.4	422.7	341.6	289.5	252.3	202.2	166.3	87.3



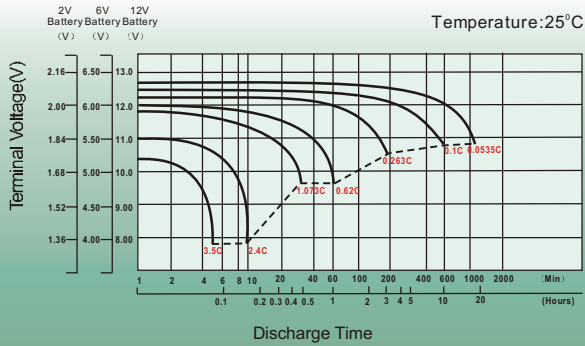
Dimensions

T11 Terminal

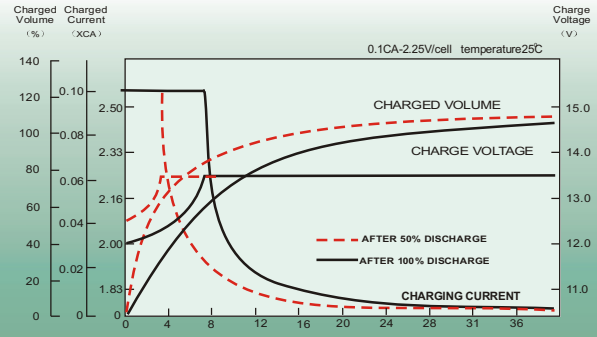
Unit: mm [inches]



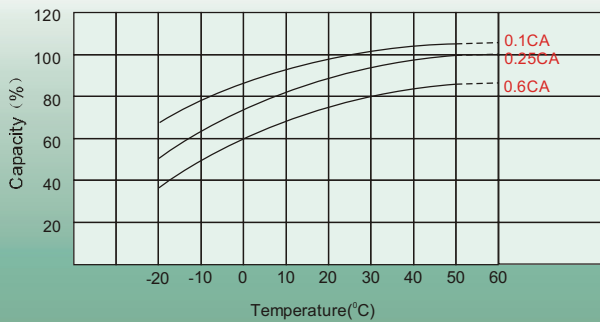
Discharge Characteristics



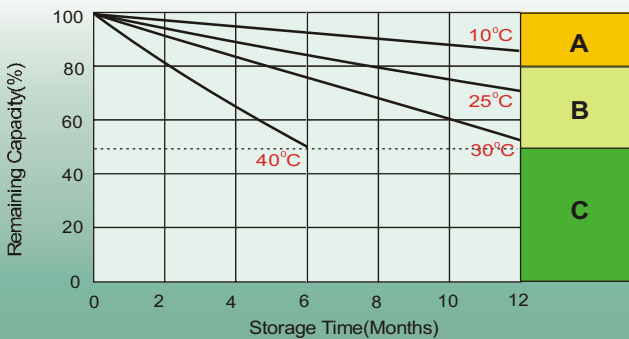
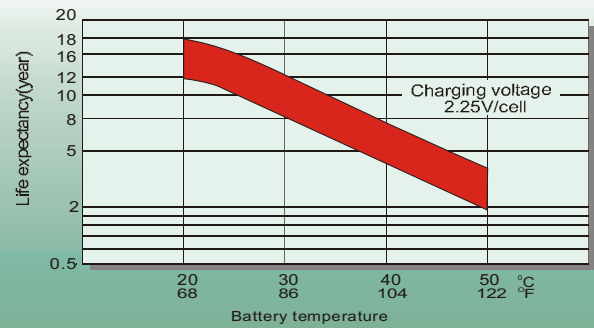
Float Charging Characteristics



Temperature Effects in Relation to Battery Capacity



Effect of Temperature on Long Term Float Life



Self Discharge Characteristics

A

No supplementary charge required
(Carry out supplementary charge before use if 100% capacity is required.)

B

Supplementary charge required before use. Optional charging way as below:
1. Charged for above 3 days at limited current 0.25CA and constant voltage 2.25V/cell.
2. Charged for above 20 hours at limited current 0.25CA and constant voltage 2.45V/cell.
3. Charged for 8~10 hours at limited current 0.05CA.

C

Supplementary charge may often fail to recover the capacity.
The battery should never be left standing till this is reached.

Sales Office

China sales office:

Add: 5th Floor, Xinbaohui Bldg., Nanhai Blvd.,
Nanshan, Shenzhen, China. 518052
Tel: +86-755-86036060 (100 lines)
Fax: +86-755-26067269
E-mail: export@leoch.com
Http://www.leoch.com

North America sales office:

Add: 19751 Descartes, Unit A,
Foothill Ranch, CA 92610, USA
Tel: 949-588-5853
Fax: 949-588-5966
E-mail: sales@leoch.us
Http://www.leoch.us

Europe sales office:

Add: 9B Wheatstone Park, Waterwells
Business Park, Gloucester, GL2 2AQ. UK.
Tel: +44(0) 01452 729428
Fax: +44 (0)1452-690125
E-mail: Sales.Europe@leoch.com

Singapore sales office:

Add: No. 53, Ubi Avenue 1, #03-21 Paya
Ubi Industrial Park, Singapore 408934
Tel: +65 6841 6629
E-mail: sales.sg@leoch.com

HongKong sales office:

Add: Unit 3910, 39/F, Cable TV Tower, No.9
Hoi Shing Road, Tsuen Wan, NT.H.K
Tel: +852 3578 6666
E-mail: sales.hk@leoch.com