

Specification

Nominal Voltage	2V	
Nominal Capacity(10HR)	600.0AH	
Dimension	Length	300±3mm (11.81 inches)
	Width	175±2mm (6.89 inches)
	Container Height	330±3mm (12.99 inches)
	Total Height (with Terminal)	350±3mm (13.78 inches)
Approx Weight	Approx 38.2 Kg (84.2lbs)	
Terminal	T11	
Container Material	ABS	
Rated Capacity	640.0 AH/32.0A	(20hr , 1.80V/cell,25°C/77°F)
	600.0 AH/60.0A	(10hr, 1.80V/cell,25°C/77°F)
	532.5 AH/106.5A	(5hr, 1.75V/cell,25°C/77°F)
	463.2 AH/154.4A	(3hr, 1.75V/cell,25°C/77°F)
	360.4 AH/360.4A	(1hr, 1.60V/cell,25°C/77°F)
Max. Discharge Current	4800A (5s)	
Internal Resistance	Approx 0.55mΩ	
Operating Temp. Range	Discharge : -15~50°C (5~122°F)	
	Charge : 0~40°C (32~104°F)	
	Storage : -15~40°C (5~104°F)	
Nominal Operating Temp. Range	25±3°C (77±5°F)	
Cycle Use	Initial Charging Current less than 180.0A.Voltage 2.4V~2.5V at 25°C(77°F)Temp. Coefficient -5mV/°C	
	Standby Use No limit on Initial Charging Current Voltage 2.25V~2.3V at 25°C(77°F)Temp. Coefficient -3mV/°C	
Capacity affected by Temperature	40°C (104°F)	103%
	25°C (77°F)	100%
	0°C (32°F)	86%
Self Discharge	Leoch LPL series batteries may be stored for up to 6 months at 25°C(77°F) and then a freshening charge is required. For higher temperatures the time interval will be shorter.	



Applications

- ◆ Tele-communication central station (wired or cellular)
- ◆ Power system communication, military communication, etc.
- ◆ Network communication including: data transmission, television signal transmission, etc.
- ◆ Uninterruptable Power System (UPS- for Telecom)
- ◆ EPS



Constant Current Discharge (Amperes) at 25 °C (77°F)

F.V/Time	30min	45min	1h	2h	3h	4h	5h	6h	8h	10h	20h
1.85V/cell	450.2	361.0	301.0	186.6	142.4	116.4	99.1	86.6	69.3	57.8	30.9
1.80V/cell	483.1	379.8	314.7	195.0	149.4	121.6	103.3	90.5	72.3	60.0	32.0
1.75V/cell	511.6	399.3	328.4	202.8	154.4	125.8	106.5	92.6	73.7	60.8	32.2
1.70V/cell	536.7	414.4	339.9	210.9	159.2	128.5	108.3	94.2	75.0	61.5	32.5
1.65V/cell	563.0	432.4	352.1	217.8	162.8	131.3	110.6	95.9	76.1	62.2	32.9
1.60V/cell	582.3	444.0	360.4	222.0	165.6	133.1	112.2	97.2	77.3	63.1	33.1

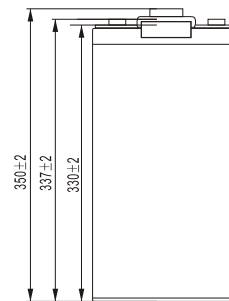
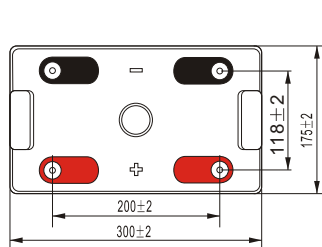
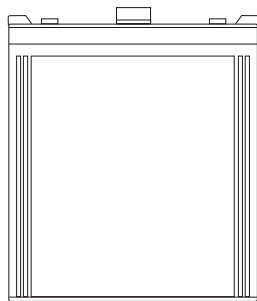
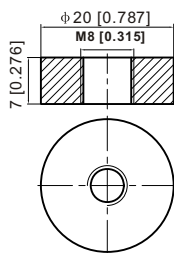
Constant Power Discharge (Watts) at 25 °C (77°F)

F.V/Time	30min	45min	1h	2h	3h	4h	5h	6h	8h	10h	20h
1.85V/cell	860.4	694.0	582.1	363.0	278.3	228.4	195.3	171.1	137.5	114.9	61.5
1.80V/cell	915.8	725.3	605.3	377.5	290.6	237.8	202.6	178.1	143.0	119.2	63.6
1.75V/cell	962.4	758.2	628.8	391.0	299.5	245.0	208.1	181.7	145.5	120.6	63.9
1.70V/cell	1001.3	781.3	647.4	404.9	307.7	249.3	211.1	184.6	147.9	121.9	64.5
1.65V/cell	1042.5	810.8	666.9	416.4	313.3	253.8	214.9	187.3	149.7	123.1	65.1
1.60V/cell	1067.4	824.8	677.9	421.8	317.0	256.2	217.1	189.3	151.6	124.7	65.5

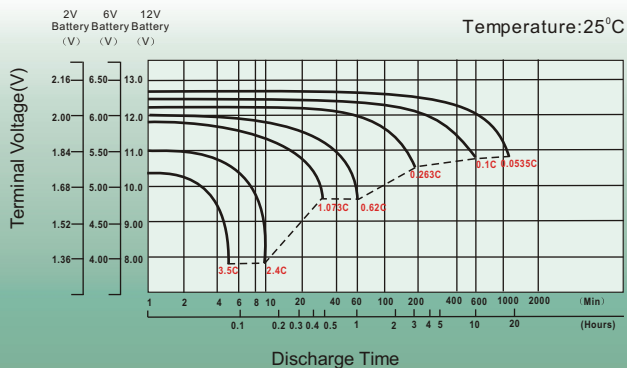
Dimensions

T11 Terminal

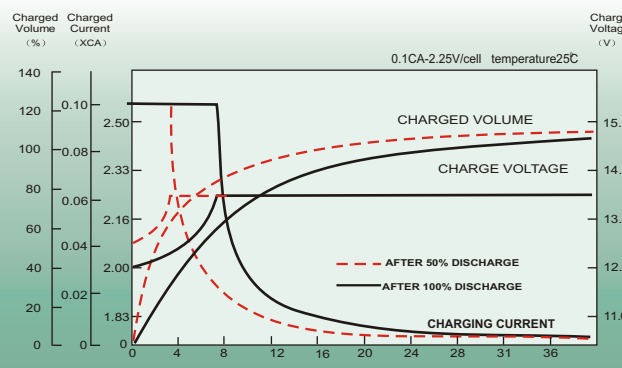
Unit: mm [inches]



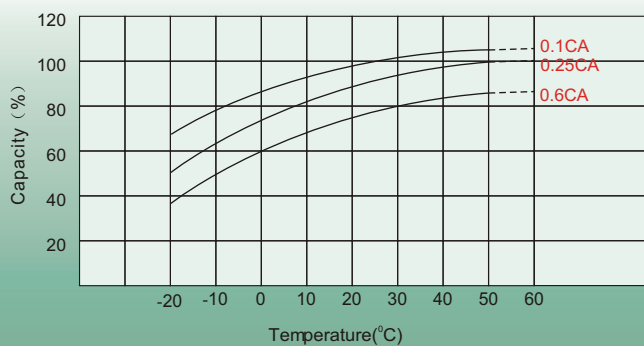
Discharge Characteristics



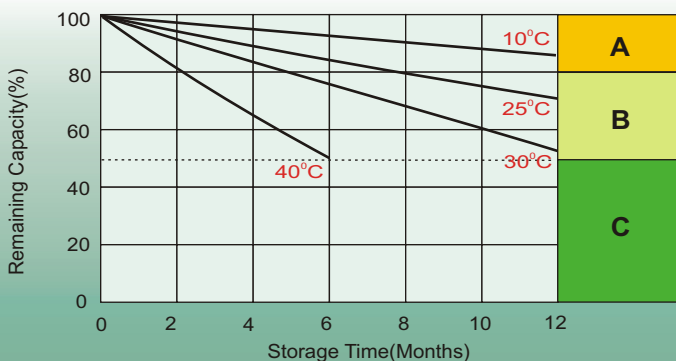
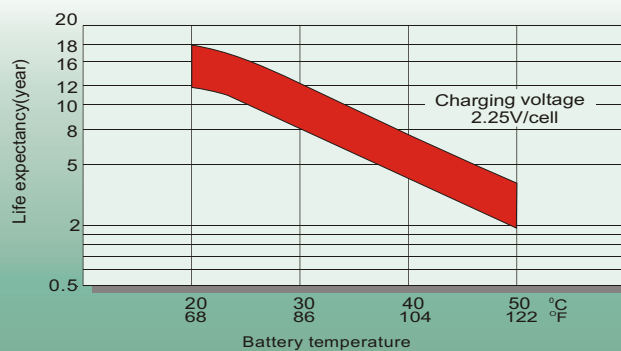
Float Charging Characteristics



Temperature Effects in Relation to Battery Capacity



Effect of Temperature on Long Term Float Life



Self Discharge Characteristics

- A** No supplementary charge required
(Carry out supplementary charge before use if 100% capacity is required.)
- B** Supplementary charge required before use. Optional charging way as below:
 1. Charged for above 3 days at limited current 0.25CA and constant volatge 2.25V/cell.
 2. Charged for above 20hours at limited current 0.25CA and constant volatge 2.45V/cell.
 3. Charged for 8~10hours at limited current 0.05CA .
- C** Supplementary charge may often fail to recover the capacity.
The battery should never be left standing till this is reached.

Sales Office

China sales office:

Add: 5th Floor, Xinbaohui Bldg., Nanhai Blvd.,
Nanshan, Shenzhen, China. 518052
Tel: +86-755-86036060 (100 lines)
Fax: +86-755-26067269
E-mail: export@leoch.com
Http://www.leoch.com

North America sales office:

Add: 19751 Descartes, Unit A,
Foothill Ranch, CA 92610, USA
Tel: 949-588-5853
Fax: 949-588-5966
E-mail: sales@leoch.us
Http://www.leoch.us

Europe sales office:

Add: 9B Wheatstone Park, Waterwells
Business Park, Gloucester, GL2 2AQ, UK.
Tel: +44(0) 01452 729428
Fax: +44 (0)1452-690125
E-mail: Sales.Europe@leoch.com

Singapore sales office:

Add: No.53, Ubi Avenue 1, #03-21 Paya
Ubi Industrial Park, Singapore 408934
Tel: + 65 6841 6629
E-mail: sales.sg@leoch.com

HongKong sales office:

Add: Unit 3910, 39/F, Cable TV Tower, No.9
Hoi Shing Road, Tsuen Wan, NT.H.K
Tel: +852 3578 6666
E-mail: sales.hk@leoch.com