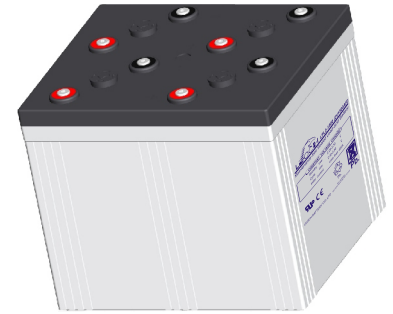


LPL SERIES-Long Life Standby

LPL2-1500 (2V1500AH)



Specification

Nominal Voltage	2V	
Nominal Capacity(10HR)	1500.0AH	
Dimension	Length	403±3mm (15.87 inches)
	Width	354±3mm (13.94 inches)
	Container Height	339±3mm (13.35 inches)
	Total Height (with Terminal)	349±3mm (13.74 inches)
	Approx Weight	Approx 98 Kg (216.1lbs)
Terminal	T11	
Container Material	ABS	
Rated Capacity	1600.0 AH/80.0A	(20hr, 1.80V/cell, 25°C/77°F)
	1500.0 AH/150.0A	(10hr, 1.80V/cell, 25°C/77°F)
	1331.0 AH/266.2A	(5hr, 1.75V/cell, 25°C/77°F)
	1158.0 AH/386.0A	(3hr, 1.75V/cell, 25°C/77°F)
	901.0 AH/901.0A	(1hr, 1.60V/cell, 25°C/77°F)
Max. Discharge Current	12000A (5s)	
Internal Resistance	Approx 0.35mΩ	
Operating Temp. Range	Discharge : -15~50°C (5~122°F)	
	Charge : 0~40°C (32~104°F)	
	Storage : -15~40°C (5~104°F)	
Nominal Operating Temp. Range	25±3°C (77±5°F)	
Cycle Use	Initial Charging Current less than 450.0A. Voltage 2.4V~2.5V at 25°C(77°F)Temp. Coefficient -5mV/°C	
	Standby Use No limit on Initial Charging Current Voltage 2.25V~2.3V at 25°C(77°F)Temp. Coefficient -3mV/°C	
Capacity affected by Temperature	40°C (104°F)	103%
	25°C (77°F)	100%
	0°C (32°F)	86%
Self Discharge	Leoch LPL series batteries may be stored for up to 6 months at 25°C(77°F) and then a freshening charge is required. For higher temperatures the time interval will be shorter.	

Applications

- ◆ Tele-communication central station (wired or cellular)
- ◆ Power system communication, military communication, etc.
- ◆ Network communication including: data transmission, television signal transmission, etc.
- ◆ Uninterruptable Power System (UPS- for Telecom)
- ◆ EPS



Constant Current Discharge (Amperes) at 25 °C (77°F)

F.V/Time	30min	45min	1h	2h	3h	4h	5h	6h	8h	10h	20h
1.85V/cell	1125.5	902.4	752.4	466.5	356.0	291.1	247.9	216.5	173.3	144.5	77.3
1.80V/cell	1207.7	949.4	786.8	487.5	373.5	304.1	258.3	226.2	180.8	150.0	80.0
1.75V/cell	1278.9	998.3	820.9	507.0	386.0	314.4	266.2	231.5	184.3	152.0	80.4
1.70V/cell	1341.9	1035.9	849.7	527.3	398.0	321.3	270.8	235.6	187.5	153.8	81.3
1.65V/cell	1407.6	1081.0	880.2	544.5	407.0	328.2	276.6	239.7	190.3	155.6	82.1
1.60V/cell	1455.8	1110.1	901.0	555.0	414.0	332.8	280.6	243.0	193.1	157.8	82.7

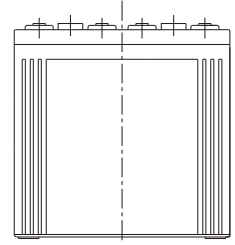
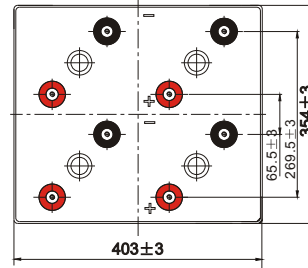
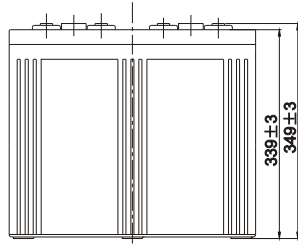
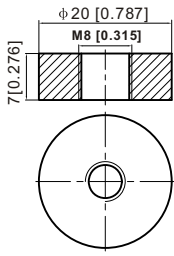
Constant Power Discharge (Watts) at 25 °C (77°F)

F.V/Time	30min	45min	1h	2h	3h	4h	5h	6h	8h	10h	20h
1.85V/cell	2151.0	1735.0	1455.4	907.4	695.7	570.9	488.3	427.8	343.8	287.3	153.9
1.80V/cell	2289.4	1813.4	1513.4	943.7	726.5	594.4	506.5	445.1	357.6	297.9	159.1
1.75V/cell	2406.0	1895.5	1572.1	977.5	748.8	612.5	520.4	454.3	363.8	301.4	159.6
1.70V/cell	2503.3	1953.3	1618.6	1012.3	769.2	623.3	527.8	461.6	369.8	304.8	161.3
1.65V/cell	2606.3	2026.9	1667.3	1041.0	783.1	634.5	537.2	468.1	374.3	307.8	162.8
1.60V/cell	2668.6	2061.9	1694.7	1054.5	792.5	640.6	542.8	473.2	379.1	311.8	163.7

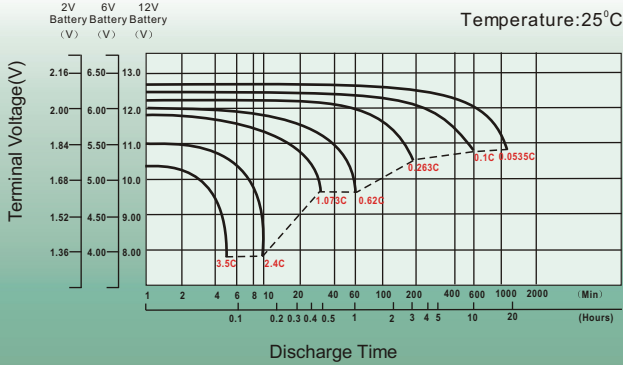
Dimensions

T11 Terminal

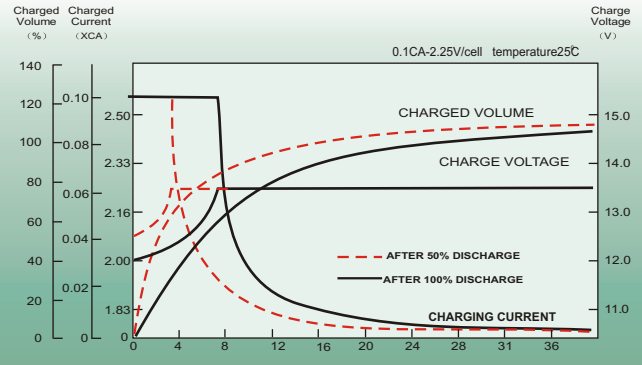
Unit: mm [inches]



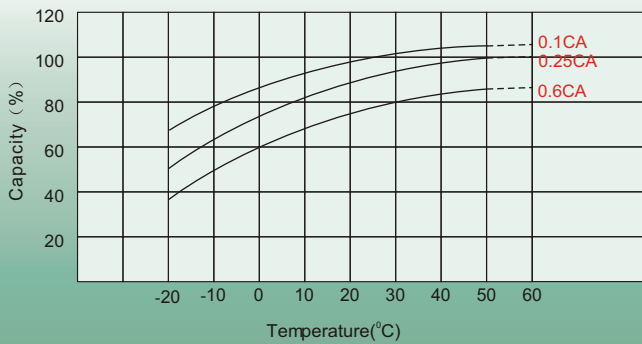
Discharge Characteristics



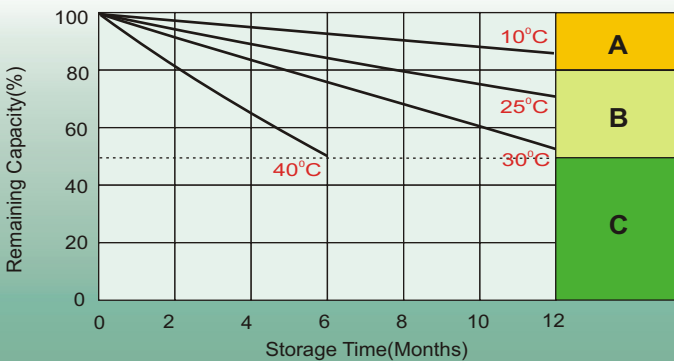
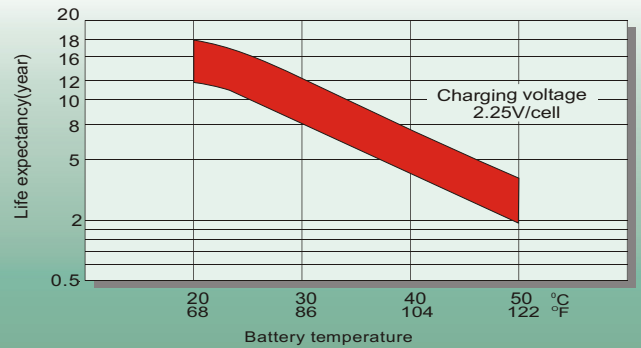
Float Charging Characteristics



Temperature Effects in Relation to Battery Capacity



Effect of Temperature on Long Term Float Life



Self Discharge Characteristics

- A** No supplementary charge required
(Carry out supplementary charge before use if 100% capacity is required.)
- B** Supplementary charge required before use. Optional charging way as below:
 1. Charged for above 3 days at limited current 0.25CA and constant volatge 2.25V/cell.
 2. Charged for above 20hours at limited current 0.25CA and constant volatge 2.45V/cell.
 3. Charged for 8~10hours at limited current 0.05CA .
- C** Supplementary charge may often fail to recover the capacity.
The battery should never be left standing till this is reached.

Sales Office

China sales office:

Add: 5th Floor, Xinbaohui Bldg., Nanhai Blvd.,
Nanshan, Shenzhen, China. 518052
Tel: +8 6-755-86036060 (100 lines)
Fax: +86-755-26067269
E-mail: export@leoch.com
Http://www.leoch.com

North America sales office:

Add: 19751 Descartes, Unit A,
Foothill Ranch, CA 92610, USA
Tel: 949-588-5853
Fax: 949-588-5966
E-mail: sales@leoch.us
Http://www.leoch.us

Europe sales office:

Add: 9B Wheatstone Park, Waterwells
Business Park, Gloucester, GL2 2AQ, UK.
Tel: +44(0) 01452 729428
Fax: +44 (0)1452-690125
E-mail: Sales.Europe@leoch.com

Singapore sales office:

Add: No.53, Ubi Avenue 1, #03-21 Paya
Ubi Industrial Park, Singapore 408934
Tel: + 65 6841 6629
E-mail: sales.sg@leoch.com

HongKong sales office:

Add: Unit 3910, 39/F, Cable TV Tower, No.9
Hoi Shing Road, Tsuen Wan, NT.H.K
Tel: +852 3578 6666
E-mail: sales.hk@leoch.com