

# LPL SERIES-Long Life Standby

## LPL2-1200 (2V1200AH)

### Specification

Nominal Voltage	2V	
Nominal Capacity(10HR)	1200.0AH	
Dimension	Length	475±3mm (18.70 inches)
	Width	175±2mm (6.89 inches)
	Container Height	328±3mm (12.91 inches)
	Total Height (with Terminal)	350±3mm (13.78 inches)
Approx Weight	Approx 65.8 Kg (145.1lbs)	
Terminal	T11	
Container Material	ABS	
Rated Capacity	1280.0 AH/64.0A	(20hr, 1.80V/cell, 25°C/77°F)
	1200.0 AH/120.0A	(10hr, 1.80V/cell, 25°C/77°F)
	1065.0 AH/213.0A	(5hr, 1.75V/cell, 25°C/77°F)
	926.4 AH/308.8A	(3hr, 1.75V/cell, 25°C/77°F)
	720.8 AH/720.8A	(1hr, 1.60V/cell, 25°C/77°F)
Max. Discharge Current	9600A (5s)	
Internal Resistance	Approx 0.4mΩ	
Operating Temp. Range	Discharge : -15~50°C (5~122°F)	
	Charge : 0~40°C (32~104°F)	
	Storage : -15~40°C (5~104°F)	
Nominal Operating Temp. Range	25±3°C (77±5°F)	
Cycle Use	Initial Charging Current less than 360.0A. Voltage 2.4V~2.5V at 25°C(77°F)Temp. Coefficient -5mV/°C	
Standby Use	No limit on Initial Charging Current Voltage 2.25V~2.3V at 25°C(77°F)Temp. Coefficient -3mV/°C	
Capacity affected by Temperature	40°C (104°F)	103%
	25°C (77°F)	100%
	0°C (32°F)	86%
Self Discharge	Leoch LPL series batteries may be stored for up to 6 months at 25°C(77°F) and then a freshening charge is required. For higher temperatures the time interval will be shorter.	



### Applications

- ◆ Tele-communication central station (wired or cellular)
- ◆ Power system communication, military communication, etc.
- ◆ Network communication including: data transmission, television signal transmission, etc.
- ◆ Uninterruptable Power System (UPS- for Telecom)
- ◆ EPS



### Constant Current Discharge (Amperes) at 25 °C (77°F)

F.V/Time	30min	45min	1h	2h	3h	4h	5h	6h	8h	10h	20h
1.85V/cell	900.4	721.9	601.9	373.2	284.8	232.9	198.3	173.2	138.6	115.6	61.8
1.80V/cell	966.1	759.5	629.4	390.0	298.8	243.3	206.6	180.9	144.6	120.0	64.0
1.75V/cell	1023.1	798.6	656.7	405.6	308.8	251.5	213.0	185.2	147.5	121.6	64.3
1.70V/cell	1073.5	828.7	679.8	421.8	318.4	257.0	216.6	188.5	150.0	123.0	65.0
1.65V/cell	1126.1	864.8	704.2	435.6	325.6	262.5	221.3	191.8	152.3	124.4	65.7
1.60V/cell	1164.7	888.0	720.8	444.0	331.2	266.2	224.5	194.4	154.5	126.2	66.2

### Constant Power Discharge (Watts) at 25 °C (77°F)

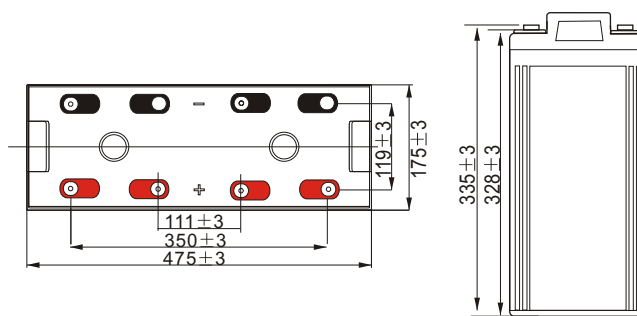
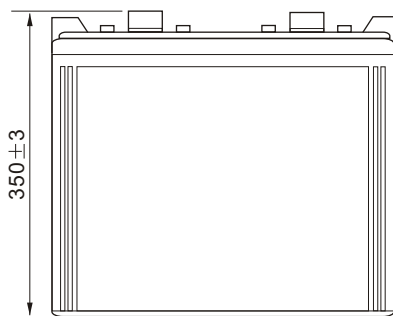
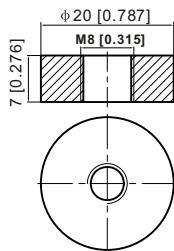
F.V/Time	30min	45min	1h	2h	3h	4h	5h	6h	8h	10h	20h
1.85V/cell	1720.8	1388.0	1164.3	725.9	556.6	456.7	390.6	342.2	275.0	229.8	123.1
1.80V/cell	1831.5	1450.7	1210.7	755.0	581.2	475.5	405.2	356.1	286.1	238.3	127.3
1.75V/cell	1924.8	1516.4	1257.7	782.0	599.1	490.0	416.3	363.4	291.1	241.1	127.7
1.70V/cell	2002.6	1562.6	1294.9	809.9	615.4	498.7	422.2	369.3	295.8	243.8	129.1
1.65V/cell	2085.0	1621.5	1333.8	832.8	626.5	507.6	429.8	374.5	299.5	246.3	130.2
1.60V/cell	2134.8	1649.5	1355.8	843.6	634.0	512.5	434.2	378.5	303.3	249.4	131.0



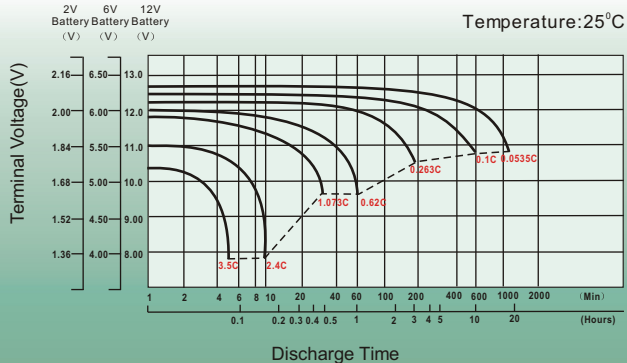
## Dimensions

### T11 Terminal

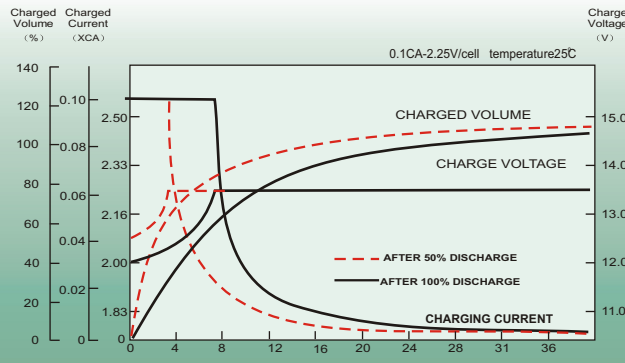
Unit: mm [inches]



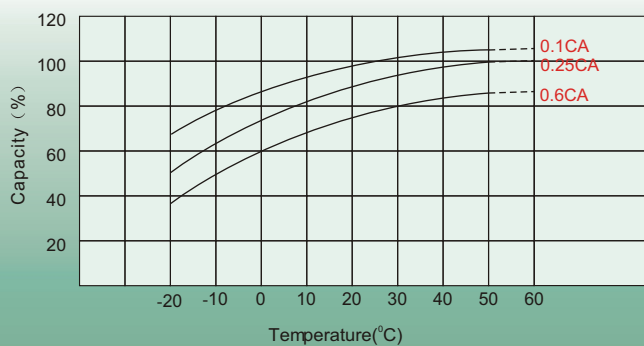
## Discharge Characteristics



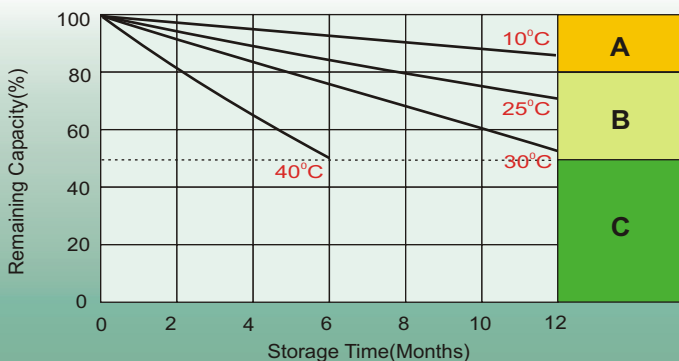
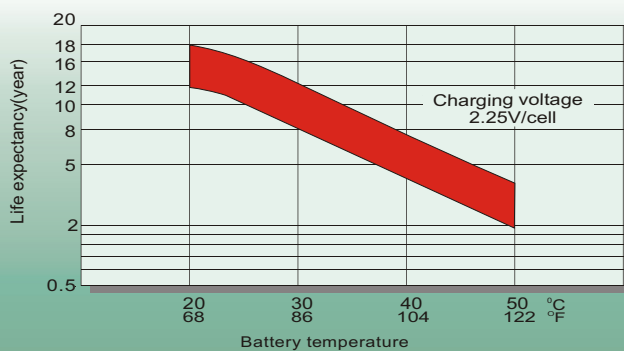
## Float Charging Characteristics



## Temperature Effects in Relation to Battery Capacity



## Effect of Temperature on Long Term Float Life



## Self Discharge Characteristics

- A** No supplementary charge required  
(Carry out supplementary charge before use if 100% capacity is required.)
- B** Supplementary charge required before use. Optional charging way as below:
  1. Charged for above 3 days at limited current 0.25CA and constant volatge 2.25V/cell.
  2. Charged for above 20hours at limited current 0.25CA and constant volatge 2.45V/cell.
  3. Charged for 8~10hours at limited current 0.05CA .
- C** Supplementary charge may often fail to recover the capacity.  
The battery should never be left standing till this is reached.

## Sales Office

### China sales office:

Add: 5th Floor, Xinbaohui Bldg., Nanhai Blvd.,  
Nanshan, Shenzhen, China. 518052  
Tel: +8 6-755-86036060 (100 lines)  
Fax: +86-755-26067269  
E-mail: export@leoch.com  
Http://www.leoch.com

### North America sales office:

Add: 19751 Descartes, Unit A,  
Foothill Ranch, CA 92610, USA  
Tel: 949-588-5853  
Fax: 949-588-5966  
E-mail: sales@leoch.us  
Http://www.leoch.us

### Europe sales office:

Add: 9B Wheatstone Park, Waterwells  
Business Park, Gloucester, GL2 2AQ, UK.  
Tel: +44(0) 01452 729428  
Fax: +44 (0)1452-690125  
E-mail: Sales.Europe@leoch.com

### Singapore sales office:

Add: No.53, Ubi Avenue 1, #03-21 Paya  
Ubi Industrial Park, Singapore 408934  
Tel: + 65 6841 6629  
E-mail: sales.sg@leoch.com

### HongKong sales office:

Add: Unit 3910, 39/F, Cable TV Tower, No.9  
Hoi Shing Road, Tsuen Wan, NT.H.K  
Tel: +852 3578 6666  
E-mail: sales.hk@leoch.com