

# LPL SERIES-Long Life Standby

## LPL2-1000 (2V1000AH)

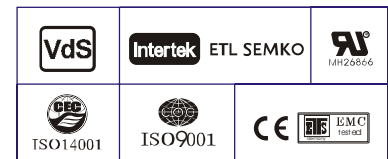
### Specification

Nominal Voltage	2V	
Nominal Capacity(10HR)	1000.0AH	
Dimension	Length	475±3mm (18.70 inches)
	Width	175±2mm (6.89 inches)
	Container Height	328±3mm (12.91 inches)
	Total Height (with Terminal)	350±3mm (13.78 inches)
	Approx Weight	Approx 60.0 Kg (132.3lbs)
Terminal	T11	
Container Material	ABS	
Rated Capacity	1068.0 AH/53.4A	(20hr, 1.80V/cell, 25°C/77°F)
	1000.0 AH/100.0A	(10hr, 1.80V/cell, 25°C/77°F)
	887.5 AH/177.5A	(5hr, 1.75V/cell, 25°C/77°F)
	771.9 AH/257.3A	(3hr, 1.75V/cell, 25°C/77°F)
	600.7 AH/600.7A	(1hr, 1.60V/cell, 25°C/77°F)
Max. Discharge Current	8000A (5s)	
Internal Resistance	Approx 0.45mΩ	
Operating Temp. Range	Discharge : -15~50°C (5~122°F)	
	Charge : 0~40°C (32~104°F)	
	Storage : -15~40°C (5~104°F)	
Nominal Operating Temp. Range	25±3°C (77±5°F)	
Cycle Use	Initial Charging Current less than 300.0A. Voltage 2.4V~2.5V at 25°C(77°F)Temp. Coefficient -5mV/°C	
	Standby Use No limit on Initial Charging Current Voltage 2.25V~2.3V at 25°C(77°F)Temp. Coefficient -3mV/°C	
Capacity affected by Temperature	40°C (104°F)	103%
	25°C (77°F)	100%
	0°C (32°F)	86%
Self Discharge	Leoch LPL series batteries may be stored for up to 6 months at 25°C(77°F) and then a freshening charge is required. For higher temperatures the time interval will be shorter.	



### Applications

- ◆ Tele-communication central station (wired or cellular)
- ◆ Power system communication, military communication, etc.
- ◆ Network communication including: data transmission, television signal transmission, etc.
- ◆ Uninterruptable Power System (UPS- for Telecom)
- ◆ EPS



### Constant Current Discharge (Amperes) at 25 °C (77°F)

F.V/Time	30min	45min	1h	2h	3h	4h	5h	6h	8h	10h	20h
1.85V/cell	750.4	601.6	501.6	311.0	237.3	194.1	165.2	144.3	115.5	96.3	51.5
1.80V/cell	805.1	632.9	524.5	325.0	249.0	202.7	172.2	150.8	120.5	100.0	53.4
1.75V/cell	852.6	665.5	547.3	338.0	257.3	209.6	177.5	154.4	122.9	101.3	53.6
1.70V/cell	894.6	690.6	566.5	351.5	265.3	214.2	180.5	157.1	125.0	102.5	54.2
1.65V/cell	938.4	720.7	586.8	363.0	271.3	218.8	184.4	159.8	126.9	103.7	54.8
1.60V/cell	/	740.0	600.7	370.0	276.0	221.9	187.1	162.0	128.8	105.2	55.2

### Constant Power Discharge (Watts) at 25 °C (77°F)

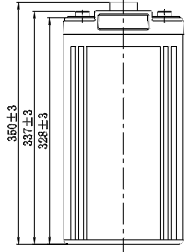
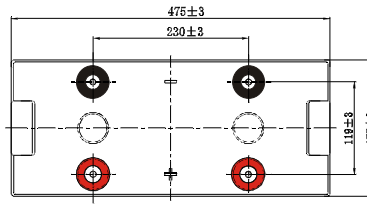
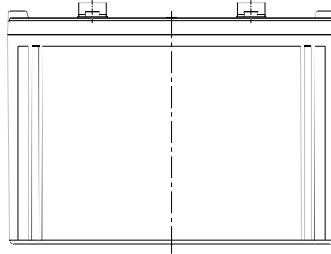
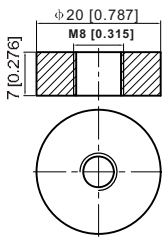
F.V/Time	30min	45min	1h	2h	3h	4h	5h	6h	8h	10h	20h
1.85V/cell	1434.0	1156.7	970.2	604.9	463.8	380.6	325.5	285.2	229.2	191.5	102.6
1.80V/cell	1526.3	1208.9	1008.9	629.1	484.3	396.3	337.7	296.8	238.4	198.6	106.1
1.75V/cell	1604.0	1263.7	1048.1	651.7	499.2	408.3	346.9	302.9	242.5	200.9	106.4
1.70V/cell	1668.8	1302.2	1079.0	674.9	512.8	415.5	351.9	307.7	246.5	203.2	107.6
1.65V/cell	1737.5	1351.3	1111.5	694.0	522.1	423.0	358.1	312.1	249.6	205.2	108.5
1.60V/cell	/	1374.6	1129.8	703.0	528.3	427.1	361.8	315.4	252.7	207.8	109.1



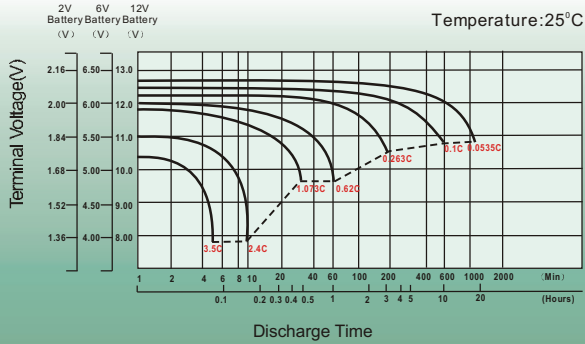
## Dimensions

### T11 Terminal

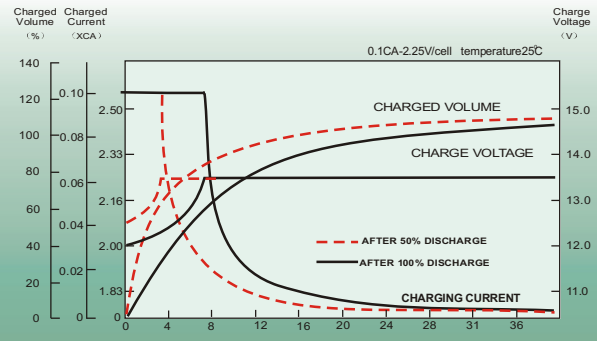
Unit: mm [inches]



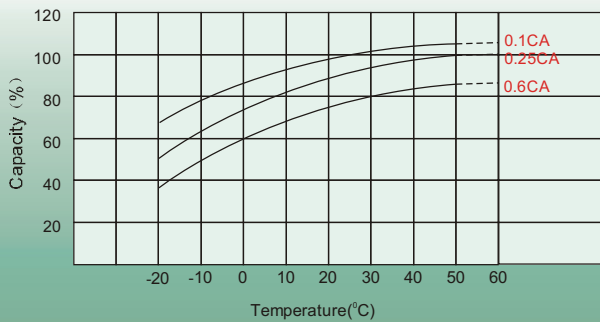
## Discharge Characteristics



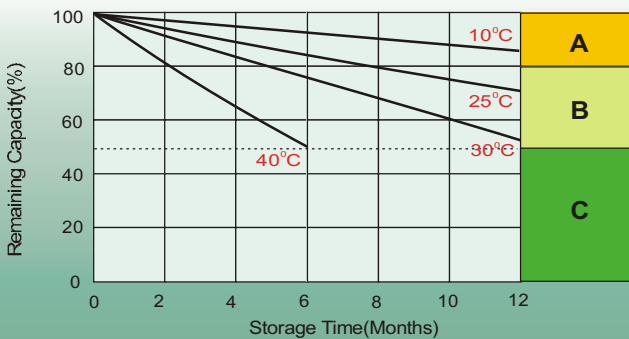
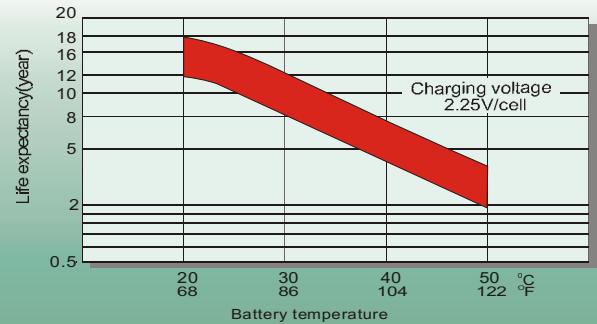
## Float Charging Characteristics



## Temperature Effects in Relation to Battery Capacity



## Effect of Temperature on Long Term Float Life



## Self Discharge Characteristics

- A** No supplementary charge required  
(Carry out supplementary charge before use if 100% capacity is required.)
- B** Supplementary charge required before use. Optional charging way as below:
  1. Charged for above 3 days at limited current 0.25CA and constant voltage 2.25V/cell.
  2. Charged for above 20 hours at limited current 0.25CA and constant voltage 2.45V/cell.
  3. Charged for 8~10 hours at limited current 0.05CA.
- C** Supplementary charge may often fail to recover the capacity.  
The battery should never be left standing till this is reached.

## Sales Office

### China sales office:

Add: 5th Floor, Xinbaohui Bldg., Nanhai Blvd.,  
Nanshan, Shenzhen, China. 518052  
Tel: +86-755-86036060 (100 lines)  
Fax: +86-755-26067269  
E-mail: export@leoch.com  
Http://www.leoch.com

### North America sales office:

Add: 19751 Descartes, Unit A,  
Foothill Ranch, CA 92610, USA  
Tel: 949-588-5853  
Fax: 949-588-5966  
E-mail: sales@leoch.us  
Http://www.leoch.us

### Europe sales office:

Add: 9B Wheatstone Park, Waterwells  
Business Park, Gloucester, GL2 2AQ. UK.  
Tel: +44(0) 1452 729428  
Fax: +44 (0)1452-690125  
E-mail: Sales.Europe@leoch.com

### Singapore sales office:

Add: No. 53, Ubi Avenue 1, #03-21 Paya  
Ubi Industrial Park, Singapore 408934  
Tel: +65 6841 6629  
E-mail: sales.sg@leoch.com

### HongKong sales office:

Add: Unit 3910, 39/F, Cable TV Tower, No.9  
Hoi Shing Road, Tsuen Wan, NT.H.K  
Tel: +852 3578 6666  
E-mail: sales.hk@leoch.com