

Specification

| | | |
|----------------------------------|--------------------------------------------------------------------------------------------------------------------------------------------------------------------------------|-------------------------------|
| Nominal Voltage | 2V | |
| Nominal Capacity(10HR) | 100.0AH | |
| Dimension | Length | 170±2mm (6.69 inches) |
| | Width | 72±1mm (2.83 inches) |
| | Container Height | 205±3mm (8.07 inches) |
| | Total Height (with Terminal) | 212±3mm (8.35 inches) |
| | Approx Weight | Approx 6.0 Kg (13.2 lbs) |
| Terminal | T6 | |
| Container Material | ABS | |
| Rated Capacity | 106.8 AH/5.34A | (20hr, 1.80V/cell, 25°C/77°F) |
| | 100.0 AH/10.0A | (10hr, 1.80V/cell, 25°C/77°F) |
| | 88.5 AH/17.7A | (5hr, 1.75V/cell, 25°C/77°F) |
| | 77.1 AH/25.7A | (3hr, 1.75V/cell, 25°C/77°F) |
| | 60.1 AH/60.1A | (1hr, 1.60V/cell, 25°C/77°F) |
| Max. Discharge Current | 800A (5s) | |
| Internal Resistance | Approx 1.4mΩ | |
| Operating Temp. Range | Discharge : -15~50°C (5~122°F) | |
| | Charge : 0~40°C (32~104°F) | |
| | Storage : -15~40°C (5~104°F) | |
| Nominal Operating Temp. Range | 25±3°C (77±5°F) | |
| Cycle Use | Initial Charging Current less than 30.0A. Voltage 2.4V~2.5V at 25°C(77°F)Temp. Coefficient -5mV/°C | |
| | Standby Use No limit on Initial Charging Current Voltage 2.25V~2.3V at 25°C(77°F)Temp. Coefficient -3mV/°C | |
| Capacity affected by Temperature | 40°C (104°F) | 103% |
| | 25°C (77°F) | 100% |
| | 0°C (32°F) | 86% |
| Self Discharge | Leoch LPL series batteries may be stored for up to 6 months at 25°C(77°F) and then a freshening charge is required. For higher temperatures the time interval will be shorter. | |



Applications

- ◆ Tele-communication central station (wired or cellular)
- ◆ Power system communication, military communication, etc.
- ◆ Network communication including: data transmission, television signal transmission, etc.
- ◆ Uninterruptable Power System (UPS- for Telecom)
- ◆ EPS



Constant Current Discharge (Amperes) at 25 °C (77°F)

| F.V/Time | 15min | 20min | 30min | 45min | 1h | 2h | 3h | 4h | 5h | 6h | 8h | 10h | 20h |
|------------|-------|-------|-------|-------|------|------|------|------|------|------|------|------|------|
| 1.85V/cell | 100.6 | 90.6 | 75.0 | 60.2 | 50.2 | 31.1 | 23.7 | 19.4 | 16.5 | 14.4 | 11.6 | 9.63 | 5.15 |
| 1.80V/cell | 114.3 | 100.9 | 80.5 | 63.3 | 52.5 | 32.5 | 24.9 | 20.3 | 17.2 | 15.1 | 12.1 | 10.0 | 5.34 |
| 1.75V/cell | 125.6 | 108.8 | 85.3 | 66.6 | 54.7 | 33.8 | 25.7 | 21.0 | 17.7 | 15.4 | 12.3 | 10.1 | 5.36 |
| 1.70V/cell | 134.1 | 116.4 | 89.5 | 69.1 | 56.6 | 35.2 | 26.5 | 21.4 | 18.1 | 15.7 | 12.5 | 10.3 | 5.42 |
| 1.65V/cell | 141.3 | 122.1 | 93.8 | 72.1 | 58.7 | 36.3 | 27.1 | 21.9 | 18.4 | 16.0 | 12.7 | 10.4 | 5.48 |
| 1.60V/cell | 148.1 | 126.6 | 97.1 | 74.0 | 60.1 | 37.0 | 27.6 | 22.2 | 18.7 | 16.2 | 12.9 | 10.5 | 5.52 |

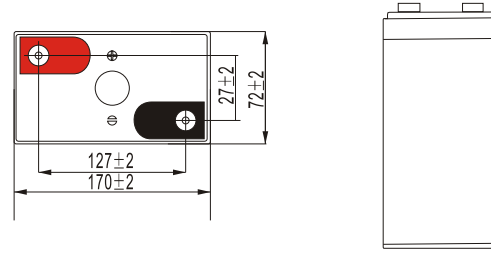
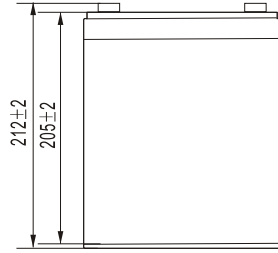
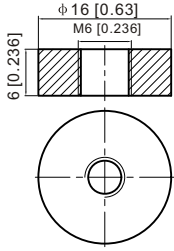
Constant Power Discharge (Watts) at 25 °C (77°F)

| F.V/Time | 15min | 20min | 30min | 45min | 1h | 2h | 3h | 4h | 5h | 6h | 8h | 10h | 20h |
|------------|-------|-------|-------|-------|-------|------|------|------|------|------|------|------|------|
| 1.85V/cell | 190.5 | 172.3 | 143.4 | 115.7 | 97.0 | 60.5 | 46.4 | 38.1 | 32.6 | 28.5 | 22.9 | 19.2 | 10.3 |
| 1.80V/cell | 213.7 | 189.9 | 152.6 | 120.9 | 100.9 | 62.9 | 48.4 | 39.6 | 33.8 | 29.7 | 23.8 | 19.9 | 10.6 |
| 1.75V/cell | 231.5 | 202.4 | 160.4 | 126.4 | 104.8 | 65.2 | 49.9 | 40.8 | 34.7 | 30.3 | 24.3 | 20.1 | 10.6 |
| 1.70V/cell | 244.6 | 214.7 | 166.9 | 130.2 | 107.9 | 67.5 | 51.3 | 41.6 | 35.2 | 30.8 | 24.7 | 20.3 | 10.8 |
| 1.65V/cell | 254.5 | 222.8 | 173.8 | 135.1 | 111.2 | 69.4 | 52.2 | 42.3 | 35.8 | 31.2 | 25.0 | 20.5 | 10.9 |
| 1.60V/cell | 262.4 | 228.4 | 177.9 | 137.5 | 113.0 | 70.3 | 52.8 | 42.7 | 36.2 | 31.5 | 25.3 | 20.8 | 10.9 |

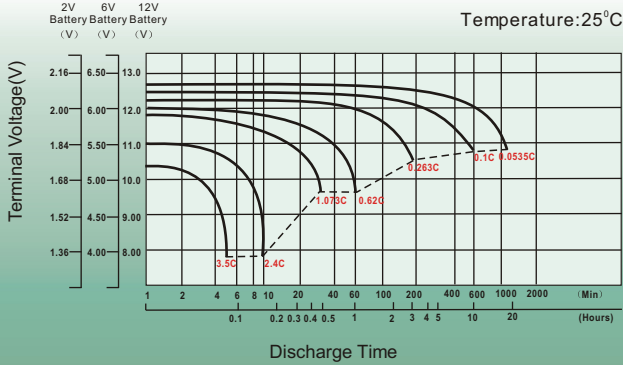
Dimensions

T6 Terminal

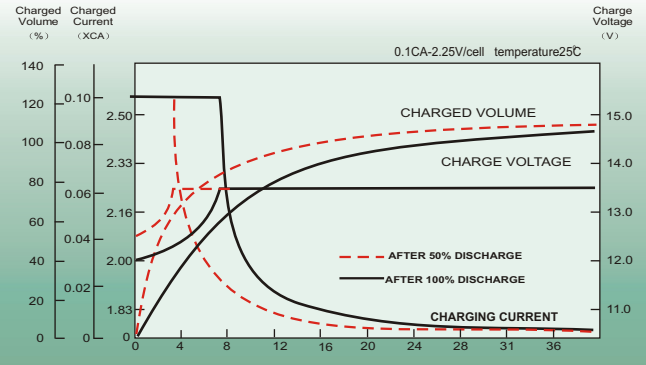
Unit: mm [inches]



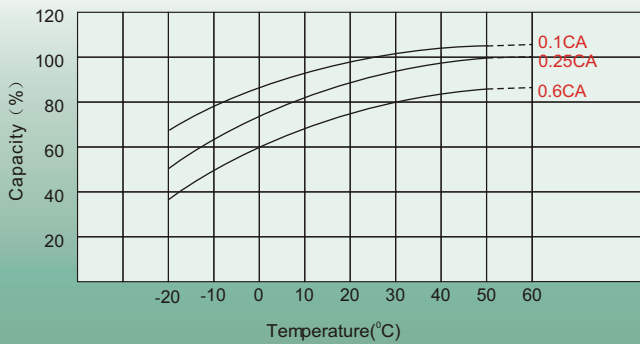
Discharge Characteristics



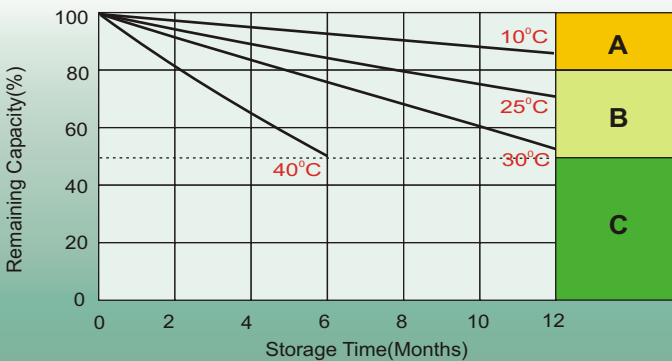
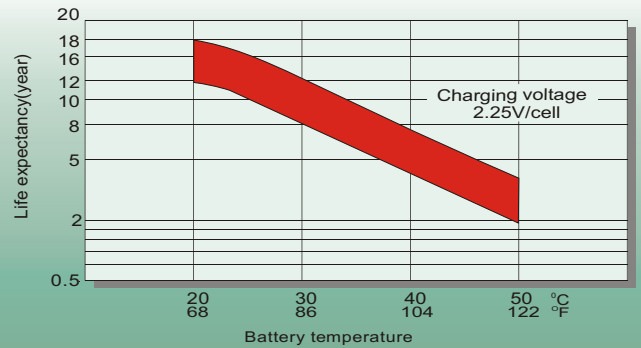
Float Charging Characteristics



Temperature Effects in Relation to Battery Capacity



Effect of Temperature on Long Term Float Life



Self Discharge Characteristics

- A** No supplementary charge required
(Carry out supplementary charge before use if 100% capacity is required.)
- B** Supplementary charge required before use. Optional charging way as below:
 1. Charged for above 3 days at limited current 0.25CA and constant volatge 2.25V/cell.
 2. Charged for above 20hours at limited current 0.25CA and constant volatge 2.45V/cell.
 3. Charged for 8~10hours at limited current 0.05CA .
- C** Supplementary charge may often fail to recover the capacity.
The battery should never be left standing till this is reached.

Sales Office

China sales office:

Add: 5th Floor, Xinbaohui Bldg., Nanhai Blvd.,
Nanshan, Shenzhen, China. 518052
Tel: +8 6-755-86036060 (100 lines)
Fax: +86-755-26067269
E-mail: export@leoch.com
Http://www.leoch.com

North America sales office:

Add: 19751 Descartes, Unit A,
Foothill Ranch, CA 92610, USA
Tel: 949-588-5853
Fax: 949-588-5966
E-mail: sales@leoch.us
Http://www.leoch.us

Europe sales office:

Add: 9B Wheatstone Park, Waterwells
Business Park, Gloucester, GL2 2AQ, UK.
Tel: +44(0) 01452 729428
Fax: +44 (0)1452-690125
E-mail: Sales.Europe@leoch.com

Singapore sales office:

Add: No.53, Ubi Avenue 1, #03-21 Paya
Ubi Industrial Park, Singapore 408934
Tel: + 65 6841 6629
E-mail: sales.sg@leoch.com

HongKong sales office:

Add: Unit 3910, 39/F, Cable TV Tower, No.9
Hoi Shing Road, Tsuen Wan, NT.H.K
Tel: +852 3578 6666
E-mail: sales.hk@leoch.com