

### Specification

Nominal Voltage	2V	
Nominal Capacity(10HR)	72.0AH	
Dimensions	Length	170±2mm (6.69 inches)
	Width	72±1mm (2.83 inches)
	Container Height	205±3mm (8.07 inches)
	Total Height (with Terminal)	212±3mm (8.35 inches)
Approx Weight	Approx 5.5 kg (12.1lbs)	
Terminal	T6	
Container Material	ABS	
Rated Capacity	75.6 AH/3.78A	(20hr, 1.80V/cell, 25°C/77°F)
	72.0 AH/7.20A	(10hr, 1.80V/cell, 25°C/77°F)
	62.5AH/12.5A	(5hr, 1.75V/cell, 25°C/77°F)
	54.3 AH/18.1A	(3hr, 1.75V/cell, 25°C/77°F)
	43.7 AH/43.7A	(1hr, 1.60V/cell, 25°C/77°F)
Max. Discharge Current	576A (5s)	
Internal Resistance	Approx 1.6mΩ	
Operating Temp. Range	Discharge	-15~50°C (5~122°F)
	Charge	0~40°C (32~104°F)
	Storage	-15~40°C (5~104°F)
Nominal Operating Temp. Range	25±3°C (77±5°F)	
Cycle Use	Initial Charging Current less than 21.6A. Voltage	
	2.4V~2.5V at 25°C(77°F)Temp. Coefficient -5mV/°C	
Standby Use	No limit on Initial Charging Current Voltage	
	2.25V~2.3V at 25°C(77°F)Temp. Coefficient -3mV/°C	
Capacity affected by Temperature	40°C (104°F)	103%
	25°C (77°F)	100%
	0°C (32°F)	86%
Self Discharge	Leoch LP series batteries may be stored for up to 6 months at 25°C(77°F) and then a freshening charge is required. For higher temperatures the time interval will be shorter.	



### Applications

- ◆ Tele-communication central station (wired or cellular)
- ◆ Power system communication, military communication, etc.
- ◆ Network communication including: data transmission, television signal transmission, etc.
- ◆ Uninterruptable Power System (UPS- for Telecom)



### Constant Current Discharge (Amperes) at 25 °C (77°F)

F.V/Time	15min	20min	30min	45min	1h	2h	3h	4h	5h	6h	8h	10h	20h
1.85V/cell	74.2	66.7	55.2	43.8	35.9	21.6	16.7	13.7	11.7	10.2	8.21	6.88	3.65
1.80V/cell	84.2	74.3	59.2	46.1	38.2	22.8	17.5	14.3	12.2	10.6	8.52	7.20	3.78
1.75V/cell	92.6	80.1	62.7	48.4	39.8	23.7	18.1	14.8	12.5	10.9	8.69	7.27	3.82
1.70V/cell	98.8	85.7	65.8	50.3	41.2	24.4	18.6	15.1	12.7	11.1	8.82	7.34	3.86
1.65V/cell	104.1	89.9	69.0	52.4	42.7	25.1	19.0	15.4	13.0	11.3	8.95	7.44	3.90
1.60V/cell	109.2	93.2	71.4	53.9	43.7	25.7	19.4	15.7	13.2	11.4	9.06	7.52	3.95

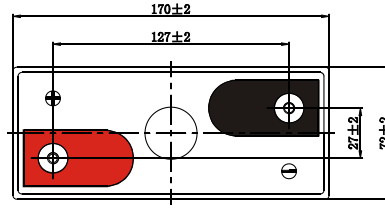
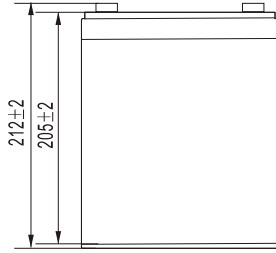
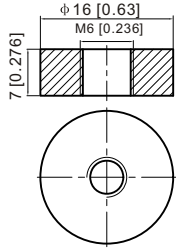
### Constant Power Discharge (Watts) at 25 °C (77°F)

F.V/Time	15min	20min	30min	45min	1h	2h	3h	4h	5h	6h	8h	10h	20h
1.85V/cell	140.4	126.9	105.5	84.2	69.5	42.0	32.6	26.9	23.0	20.1	16.3	13.7	7.26
1.80V/cell	157.5	139.8	112.3	88.0	73.4	44.1	34.0	28.0	23.8	20.9	16.9	14.3	7.51
1.75V/cell	170.5	149.0	118.0	92.0	76.2	45.7	35.2	28.8	24.5	21.4	17.1	14.4	7.58
1.70V/cell	180.2	158.0	122.8	94.8	78.5	46.9	36.0	29.3	24.8	21.7	17.4	14.6	7.65
1.65V/cell	187.5	164.0	127.8	98.3	80.9	48.1	36.6	29.9	25.3	22.0	17.6	14.7	7.74
1.60V/cell	193.4	168.2	130.9	100.0	82.2	48.9	37.2	30.1	25.5	22.3	17.8	14.9	7.82

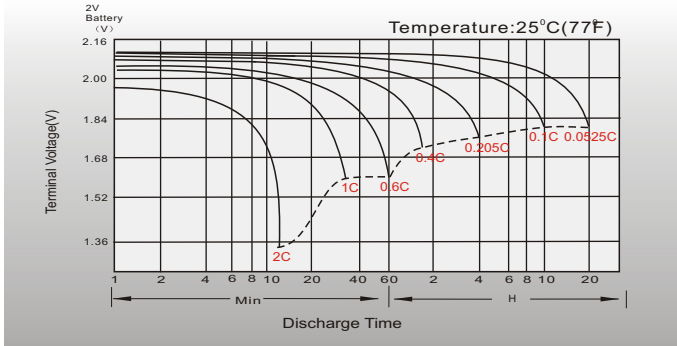
# Dimensions

## T6 Terminal

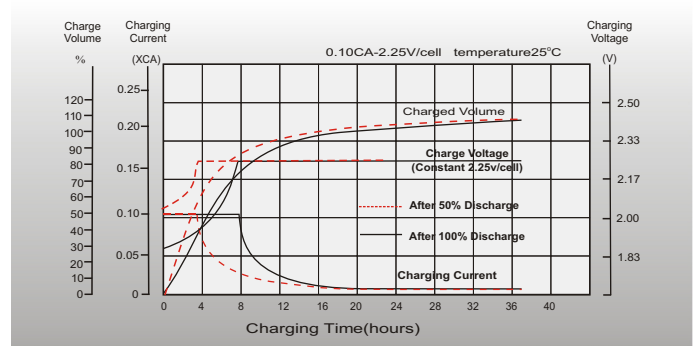
Unit: mm [inches]



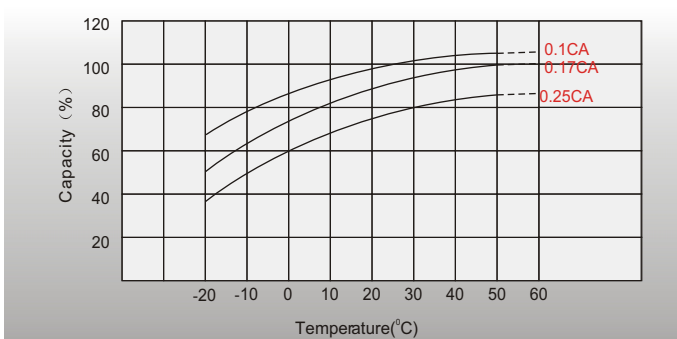
## Discharge Characteristics



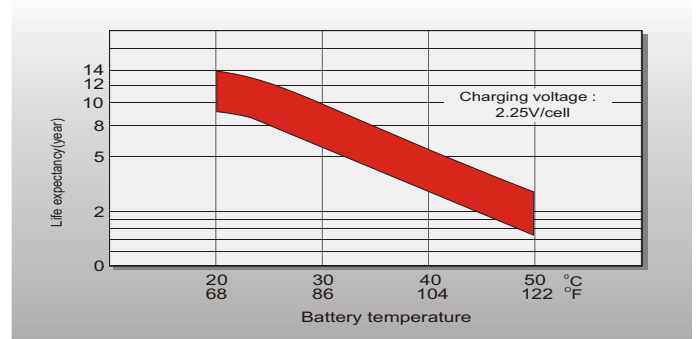
## Float Charging Characteristics



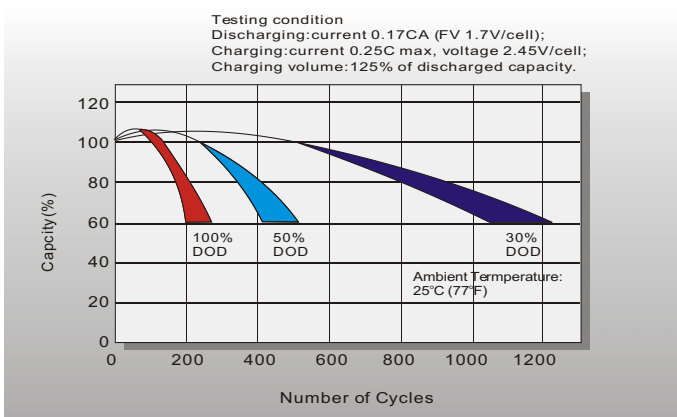
## Temperature Effects in Relation to Battery Capacity



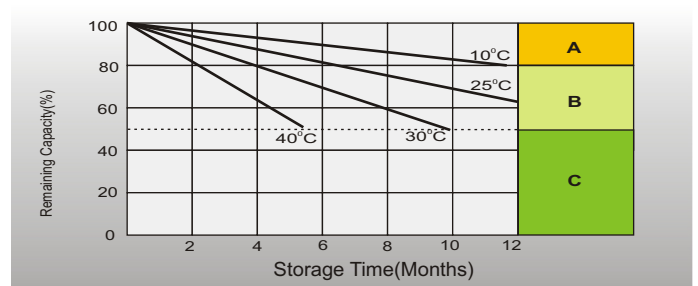
## Effect of Temperature on Long Term Float Life



## Cycle Life in Relation to Depth of Discharge



## Self Discharge Characteristics



- A** No supplementary charge required (Carry out supplementary charge before use if 100% capacity is required.)
- B** Supplementary charge required before use. Optional charging way as below:  
1. Charged for above 3 days at limited current 0.25CA and constant voltage 2.25V/cell.  
2. Charged for above 20 hours at limited current 0.25CA and constant voltage 2.45V/cell.  
3. Charged for 8-10 hours at limited current 0.05CA.
- C** Supplementary charge may often fail to recover the capacity. The battery should never be left standing till this is reached.

## Sales Office

### China sales office:

Add: 5th Floor, Xinbaohui Bldg., Nanhai Blvd.,  
Nanshan, Shenzhen, China. 518052  
Tel: +86-755-86036060 (100 lines)  
Fax: +86-755-26067269  
E-mail: export@leoch.com  
Http://www.leoch.com

### North America sales office:

Add: 19751 Descartes, Unit A,  
Foothill Ranch, CA 92610, USA  
Tel: 949-588-5853  
Fax: 949-588-5966  
E-mail: sales@leoch.us  
Http://www.leoch.us

### Europe sales office:

Add: 9B Wheatstone Park, Waterwells  
Business Park, Gloucester, GL2 2AQ, UK.  
Tel: +44(0) 01452 729428  
Fax: +44 (0)1452-690125  
E-mail: Sales.Europe@leoch.com

### Singapore sales office:

Add: No.53, Ubi Avenue 1, #03-21 Paya  
Ubi Industrial Park, Singapore 408934  
Tel: + 65 6841 6629  
E-mail: sales.sg@leoch.com

### HongKong sales office:

Add: Unit 3910, 39/F, Cable TV Tower, No.9  
Hoi Shing Road, Tsuen Wan, NT, H.K  
Tel: +852 3578 6666  
E-mail: sales.hk@leoch.com