

### Specification

Nominal Voltage	2V	
Nominal Capacity(10HR)	350.0AH	
Dimensions	Length	170±2mm (6.69 inches)
	Width	150±2mm (5.91 inches)
	Container Height	328±3mm (12.91 inches)
	Total Height (with Terminal)	350±3mm (13.78 inches)
Approx Weight	Approx 19.0 kg (41.9lbs)	
Terminal	T11	
Container Material	ABS	
Rated Capacity	368.0 AH/18.4A	(20hr, 1.80V/cell, 25°C/77°F)
	350.0 AH/35.0A	(10hr, 1.80V/cell, 25°C/77°F)
	304.5 AH/60.9A	(5hr, 1.75V/cell, 25°C/77°F)
	264.6 AH/88.2A	(3hr, 1.75V/cell, 25°C/77°F)
	212.5 AH/212.5A	(1hr, 1.60V/cell, 25°C/77°F)
Max. Discharge Current	2800A (5s)	
Internal Resistance	Approx 0.8mΩ	
Operating Temp. Range	Discharge	-15~50°C (5~122°F)
	Charge	0~40°C (32~104°F)
	Storage	-15~40°C (5~104°F)
Nominal Operating Temp. Range	25±3°C (77±5°F)	
Cycle Use	Initial Charging Current less than 105.0A. Voltage	
	2.4V~2.5V at 25°C(77°F)Temp. Coefficient -5mV/°C	
Standby Use	No limit on Initial Charging Current Voltage	
	2.25V~2.3V at 25°C(77°F)Temp. Coefficient -3mV/°C	
Capacity affected by Temperature	40°C (104°F)	103%
	25°C (77°F)	100%
	0°C (32°F)	86%
Self Discharge	Leoch LP series batteries may be stored for up to 6 months at 25°C(77°F) and then a freshening charge is required. For higher temperatures the time interval will be shorter.	



### Applications

- ◆ Tele-communication central station (wired or cellular)
- ◆ Power system communication, military communication, etc.
- ◆ Network communication including: data transmission, television signal transmission, etc.
- ◆ Uninterruptable Power System (UPS- for Telecom)



### Constant Current Discharge (Amperes) at 25 °C (77°F)

F.V/Time	15min	20min	30min	45min	1h	2h	3h	4h	5h	6h	8h	10h	20h
1.85V/cell	360.5	324.5	268.4	212.8	174.7	104.9	81.1	66.6	56.7	49.5	39.9	33.4	17.7
1.80V/cell	409.5	361.2	288.0	223.9	185.5	110.7	85.1	69.6	59.1	51.7	41.4	35.0	18.4
1.75V/cell	449.9	389.3	304.9	235.4	193.6	115.3	88.2	71.9	60.9	53.0	42.2	35.4	18.6
1.70V/cell	/	416.4	320.0	244.3	200.3	118.7	90.5	73.5	62.0	53.9	42.9	35.7	18.7
1.65V/cell	/	436.9	335.6	254.9	207.6	122.2	92.5	75.1	63.3	54.8	43.5	36.2	19.0
1.60V/cell	/	453.1	347.2	261.8	212.5	125.1	94.5	76.1	64.2	55.6	44.1	36.6	19.2

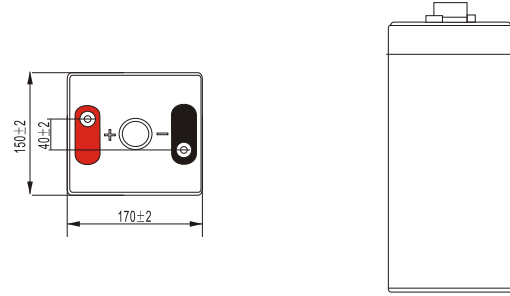
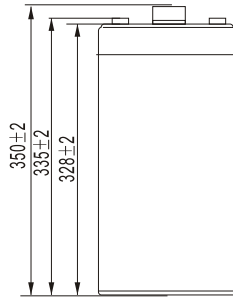
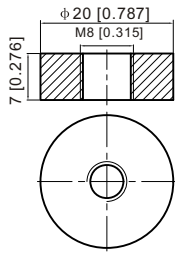
### Constant Power Discharge (Watts) at 25 °C (77°F)

F.V/Time	15min	20min	30min	45min	1h	2h	3h	4h	5h	6h	8h	10h	20h
1.85V/cell	682.6	617.1	512.9	409.2	337.8	204.1	158.5	130.6	111.7	97.9	79.2	66.5	35.3
1.80V/cell	765.4	679.8	545.9	427.6	356.8	214.2	165.4	136.0	115.9	101.8	82.0	69.5	36.5
1.75V/cell	829.0	724.4	573.7	447.0	370.6	222.2	171.1	140.1	119.0	103.9	83.3	70.1	36.9
1.70V/cell	/	768.0	596.9	460.6	381.6	227.8	175.0	142.6	120.7	105.6	84.5	70.8	37.2
1.65V/cell	/	797.3	621.5	478.0	393.1	233.7	178.0	145.2	122.9	107.1	85.5	71.6	37.6
1.60V/cell	/	817.5	636.4	486.3	399.6	237.7	180.9	146.5	124.2	108.2	86.5	72.3	38.0

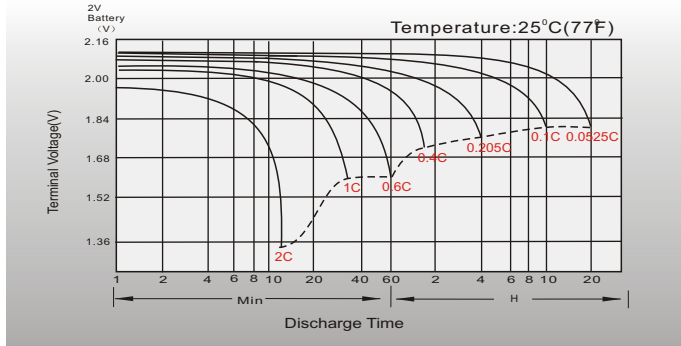
# Dimensions

## T11 Terminal

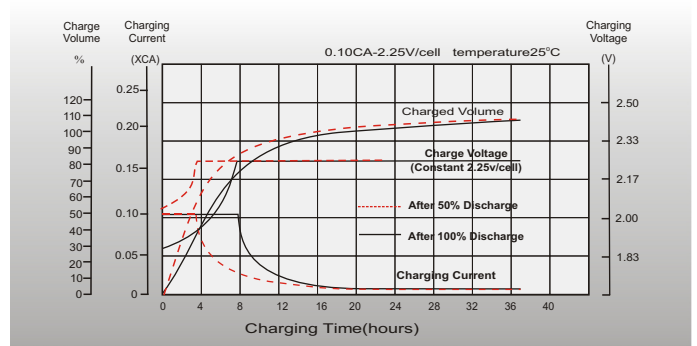
Unit: mm [inches]



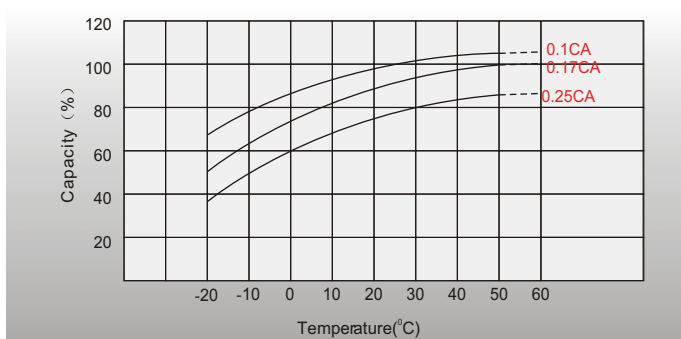
## Discharge Characteristics



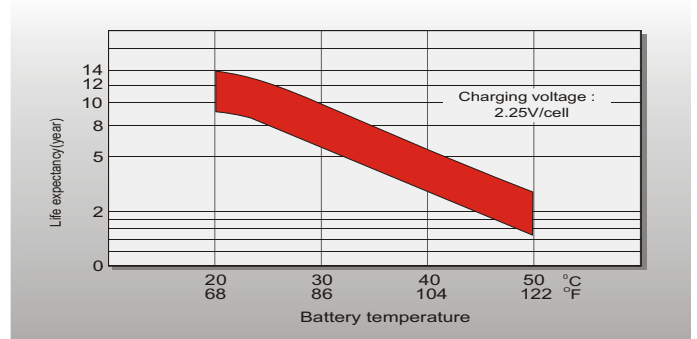
## Float Charging Characteristics



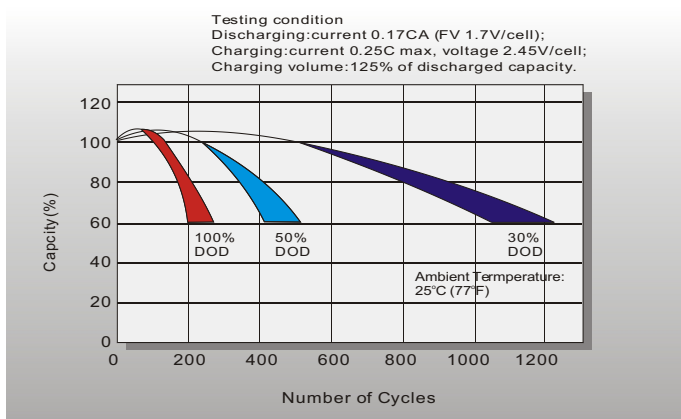
## Temperature Effects in Relation to Battery Capacity



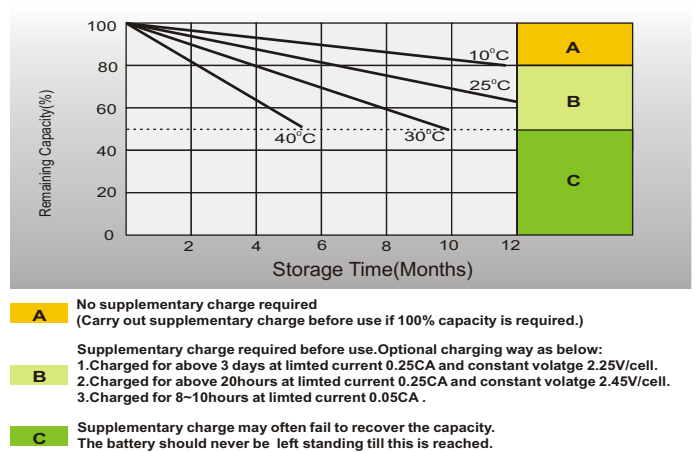
## Effect of Temperature on Long Term Float Life



## Cycle Life in Relation to Depth of Discharge



## Self Discharge Characteristics



## Sales Office

### China sales office:

Add: 5th Floor, Xinbaohui Bldg., Nanhai Blvd.,  
Nanshan, Shenzhen, China. 518052  
Tel: +86-755-86036060 (100 lines)  
Fax: +86-755-26067269  
E-mail: export@leoch.com  
Http://www.leoch.com

### North America sales office:

Add: 19751 Descartes, Unit A,  
Foothill Ranch, CA 92610, USA  
Tel: 949-588-5853  
Fax: 949-588-5966  
E-mail: sales@leoch.us  
Http://www.leoch.us

### Europe sales office:

Add: 9B Wheatstone Park, Waterwells  
Business Park, Gloucester, GL2 2AQ, UK.  
Tel: +44(0) 01452 729428  
Fax: +44 (0)1452-690125  
E-mail: Sales.Europe@leoch.com

### Singapore sales office:

Add: No.53, Ubi Avenue 1, #03-21 Paya  
Ubi Industrial Park, Singapore 408934  
Tel: + 65 6841 6629  
E-mail: sales.sg@leoch.com

### HongKong sales office:

Add: Unit 3910, 39/F, Cable TV Tower, No.9  
Hoi Shing Road, Tsuen Wan, NT.H.K  
Tel: +852 3578 6666  
E-mail: sales.hk@leoch.com