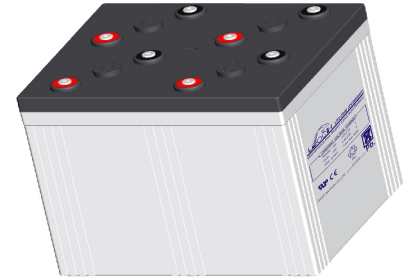


LP SERIES-General Purpose

LP2-2000 (2V2000AH)



Specification

| | | |
|----------------------------------|---|-------------------------------|
| Nominal Voltage | 2V | |
| Nominal Capacity(10HR) | 2000.0AH | |
| Dimensions | Length | 490±3mm (19.29 inches) |
| | Width | 350±3mm (13.78 inches) |
| | Container Height | 339±3mm (13.35 inches) |
| | Total Height (with Terminal) | 349±3mm (13.74 inches) |
| Approx Weight | Approx 119.0Kg (262.4lbs) | |
| Terminal | T11 | |
| Container Material | ABS | |
| Rated Capacity | 2100.0 AH/105.0A | (20hr, 1.80V/cell, 25°C/77°F) |
| | 2000.0 AH/200.0A | (10hr, 1.80V/cell, 25°C/77°F) |
| | 1740.0 AH/348.0A | (5hr, 1.75V/cell, 25°C/77°F) |
| | 1512.0 AH/504.0A | (3hr, 1.75V/cell, 25°C/77°F) |
| | 1214.0 AH/1214.0A | (1hr, 1.60V/cell, 25°C/77°F) |
| Max. Discharge Current | 16000A (5s) | |
| Internal Resistance | Approx 0.28mΩ | |
| Operating Temp. Range | Discharge | -15~50°C (5~122°F) |
| | Charge | 0~40°C (32~104°F) |
| | Storage | -15~40°C (5~104°F) |
| Nominal Operating Temp. Range | 25±3°C (77±5°F) | |
| Cycle Use | Initial Charging Current less than 600.0A. Voltage | |
| | 2.4V~2.5V at 25°C(77°F)Temp. Coefficient -5mV/°C | |
| Standby Use | No limit on Initial Charging Current Voltage | |
| | 2.25V~2.3V at 25°C(77°F)Temp. Coefficient -3mV/°C | |
| Capacity affected by Temperature | 40°C (104°F) | 103% |
| | 25°C (77°F) | 100% |
| | 0°C (32°F) | 86% |
| Self Discharge | Leoch LP series batteries may be stored for up to 6 months at 25°C(77°F) and then a freshening charge is required. For higher temperatures the time interval will be shorter. | |

Applications

- ◆ Tele-communication central station (wired or cellular)
- ◆ Power system communication, military communication, etc.
- ◆ Network communication including: data transmission, television signal transmission, etc.
- ◆ Uninterruptable Power System (UPS- for Telecom)



Constant Current Discharge (Amperes) at 25 °C (77°F)

| F.V/Time | 30min | 45min | 1h | 2h | 3h | 4h | 5h | 6h | 8h | 10h | 20h |
|------------|--------|--------|--------|-------|-------|-------|-------|-------|-------|-------|-------|
| 1.85V/cell | 1533.6 | 1216.0 | 998.0 | 599.5 | 463.3 | 380.5 | 324.0 | 283.0 | 228.0 | 191.0 | 101.3 |
| 1.80V/cell | 1645.5 | 1279.3 | 1060.0 | 632.4 | 486.0 | 397.5 | 337.6 | 295.7 | 236.8 | 200.0 | 105.0 |
| 1.75V/cell | 1742.5 | 1345.2 | 1106.0 | 658.6 | 504.0 | 411.0 | 348.0 | 302.7 | 241.3 | 202.0 | 106.1 |
| 1.70V/cell | 1828.4 | 1395.9 | 1144.7 | 678.0 | 517.3 | 420.0 | 354.0 | 308.0 | 245.0 | 204.0 | 107.1 |
| 1.65V/cell | 1917.9 | 1456.7 | 1186.0 | 698.4 | 528.7 | 429.0 | 361.6 | 313.3 | 248.5 | 206.6 | 108.5 |
| 1.60V/cell | / | 1496.0 | 1214.0 | 715.0 | 540.0 | 435.0 | 366.8 | 317.7 | 251.8 | 209.0 | 109.7 |

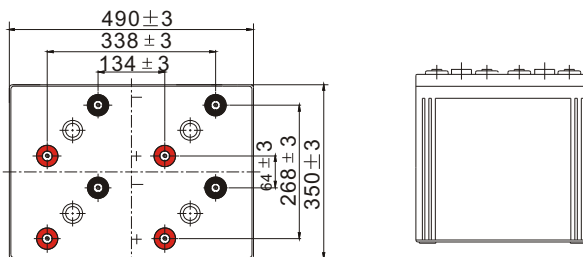
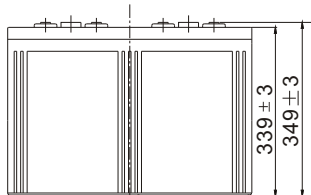
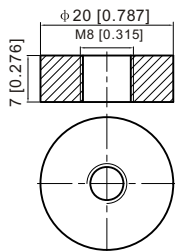
Constant Power Discharge (Watts) at 25 °C (77°F)

| F.V/Time | 30min | 45min | 1h | 2h | 3h | 4h | 5h | 6h | 8h | 10h | 20h |
|------------|--------|--------|--------|--------|--------|-------|-------|-------|-------|-------|-------|
| 1.85V/cell | 2930.8 | 2338.0 | 1930.4 | 1166.0 | 905.5 | 746.3 | 638.3 | 559.2 | 452.4 | 379.9 | 201.7 |
| 1.80V/cell | 3119.4 | 2443.5 | 2038.9 | 1224.3 | 945.3 | 777.0 | 662.1 | 581.9 | 468.4 | 397.2 | 208.7 |
| 1.75V/cell | 3278.2 | 2554.3 | 2118.0 | 1269.9 | 977.8 | 800.6 | 680.2 | 593.8 | 476.2 | 400.7 | 210.6 |
| 1.70V/cell | 3410.8 | 2632.0 | 2180.6 | 1301.8 | 999.9 | 814.8 | 689.9 | 603.4 | 483.1 | 404.4 | 212.5 |
| 1.65V/cell | 3551.2 | 2731.3 | 2246.4 | 1335.3 | 1017.3 | 829.5 | 702.2 | 611.9 | 488.8 | 408.9 | 215.0 |
| 1.60V/cell | / | 2778.8 | 2283.5 | 1358.5 | 1033.7 | 837.4 | 709.5 | 618.5 | 494.2 | 412.9 | 217.1 |

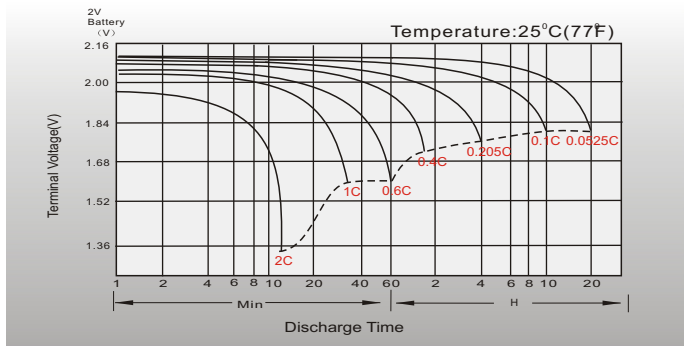
Dimensions

T11 Terminal

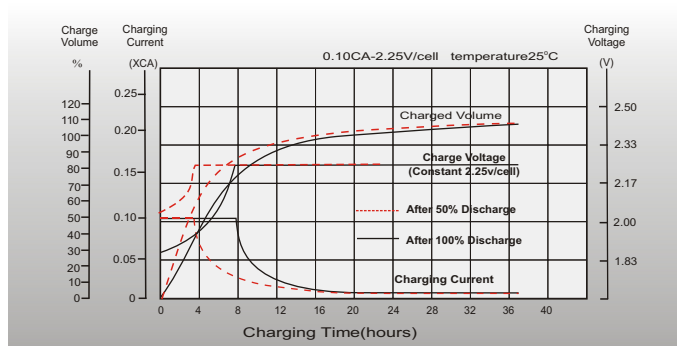
Unit: mm [inches]



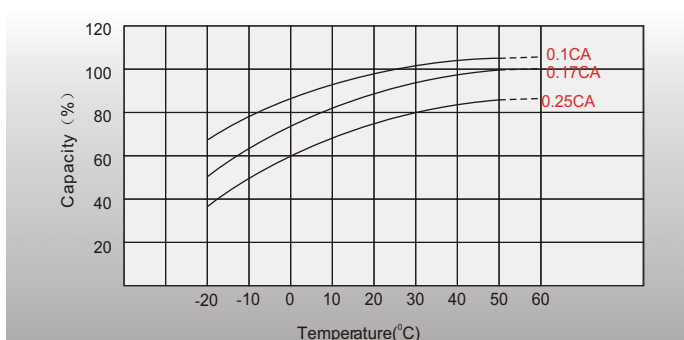
Discharge Characteristics



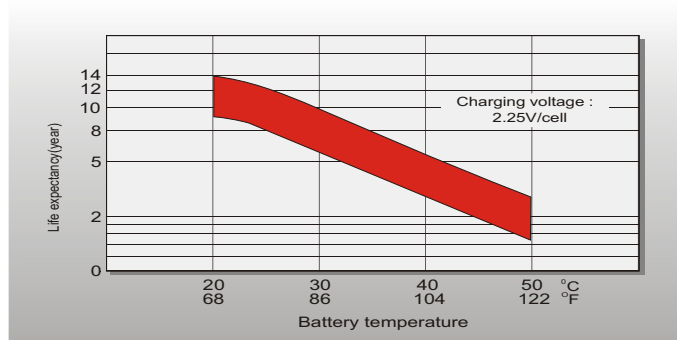
Float Charging Characteristics



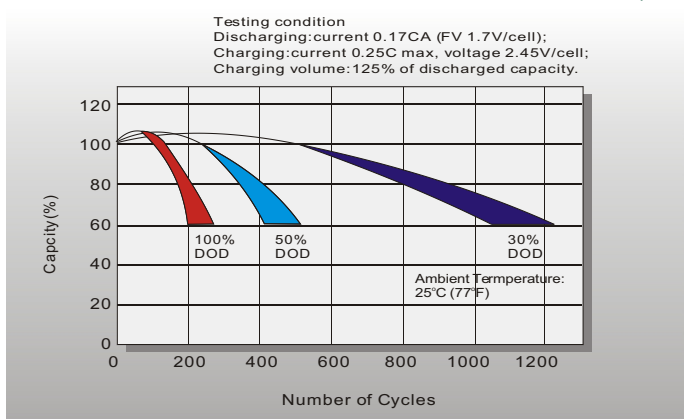
Temperature Effects in Relation to Battery Capacity



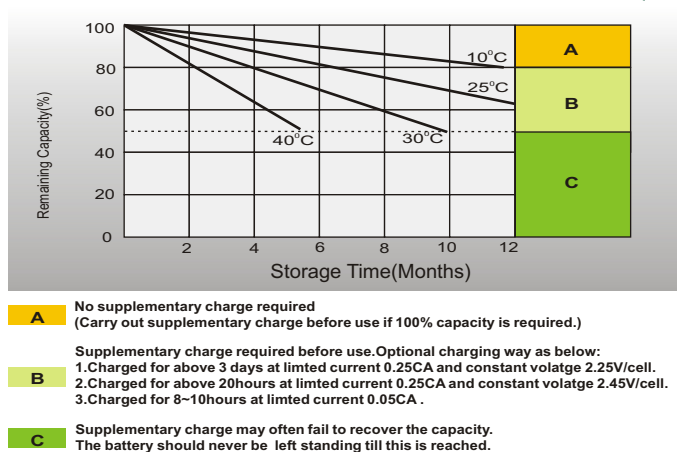
Effect of Temperature on Long Term Float Life



Cycle Life in Relation to Depth of Discharge



Self Discharge Characteristics



Sales Office

China sales office:

Add: 5th Floor, Xinbaohui Bldg., Nanhai Blvd.,
Nanshan, Shenzhen, China. 518052
Tel: +86-755-86036060 (100 lines)
Fax: +86-755-26067269
E-mail: export@leoch.com
Http://www.leoch.com

North America sales office:

Add: 19751 Descartes, Unit A,
Foothill Ranch, CA 92610, USA
Tel: 949-588-5853
Fax: 949-588-5966
E-mail: sales@leoch.us
Http://www.leoch.us

Europe sales office:

Add: 9B Wheatstone Park, Waterwells
Business Park, Gloucester, GL2 2AQ, UK.
Tel: +44(0) 01452 729428
Fax: +44 (0)1452-690125
E-mail: Sales.Europe@leoch.com

Singapore sales office:

Add: No.53, Ubi Avenue 1, #03-21 Paya
Ubi Industrial Park, Singapore 408934
Tel: + 65 6841 6629
E-mail: sales.sg@leoch.com

HongKong sales office:

Add: Unit 3910, 39/F, Cable TV Tower, No.9
Hoi Shing Road, Tsuen Wan, NT, H.K.
Tel: +852 3578 6666
E-mail: sales.hk@leoch.com